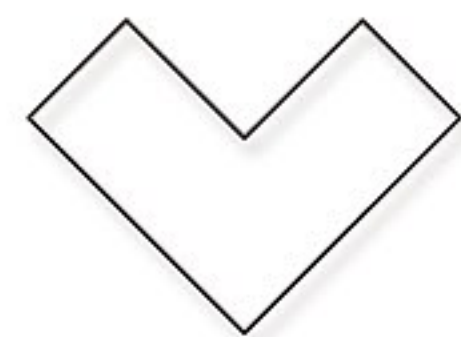


**WIFI**  
CERAMICHE  
唯梵

**MUSIVO**  
COLLECTIONS

**PATTERNS**





momo 桃  
MOMO PEACH



YXZS003



YXQF004



YXZS005



YXZS006

名称：MOMO 桃 (NAME:MOMO PEACH)

尺寸：200X200MM (SIZE: 200X200MM)

数量：26 片 / 箱 (QUANTITY: 26 PIECES/CASE)

重量：约 13KG / 箱 (WEIGHT: ABOUT 13 KG/BOX)

M<sup>2</sup>：约 32 片 / 平方 (M<sup>2</sup>: ABOUT 32 PIECES/SQUARE)

厚度：约 13MM (THICKNESS: ABOUT 13MM)





YXHZ002  
(八合一混装)

名称：MOMO 桃 (NAME:MOMO PEACH)

尺寸：200X200MM (SIZE: 200X200MM)

数量：26 片 / 箱 (QUANTITY: 26 PIECES/CASE)

重量：约 13KG / 箱 (WEIGHT: ABOUT 13 KG/BOX)

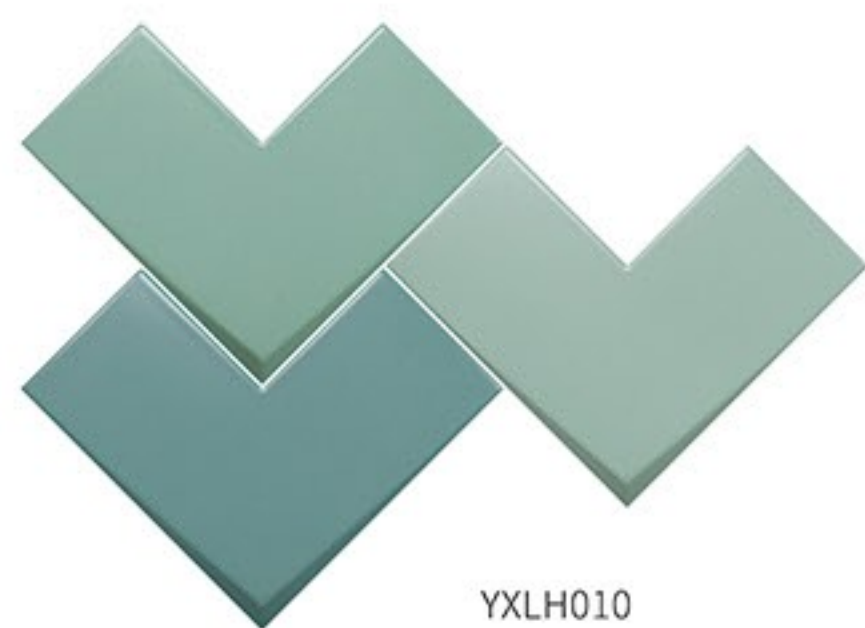
M<sup>2</sup>：约 32 片 / 平方 (M<sup>2</sup>: ABOUT 32 PIECES/SQUARE)

厚度：约 13MM (THICKNESS: ABOUT 13MM)





YXHZ001  
(六合一混装)



YXLH010  
(三合一混装)

名称：MOMO 桃 (NAME:MOMO PEACH)

尺寸：200X200MM (SIZE: 200X200MM)

数量：26 片 / 箱 (QUANTITY: 26 PIECES/CASE)

重量：约 13KG / 箱 (WEIGHT: ABOUT 13 KG/BOX)

M<sup>2</sup>：约 32 片 / 平方 (M<sup>2</sup>: ABOUT 32 PIECES/SQUARE)

厚度：约 13MM (THICKNESS: ABOUT 13MM)





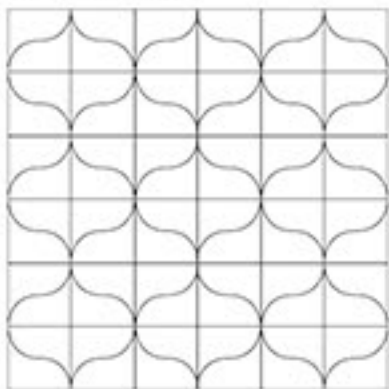
泥彩  
Mud color



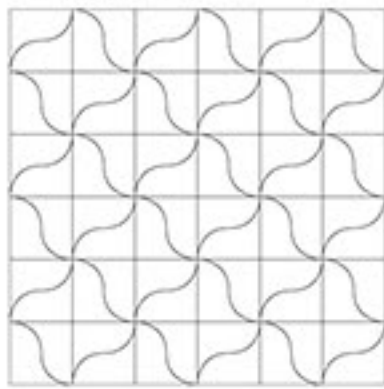
NCZH-004A

NCZH-004B

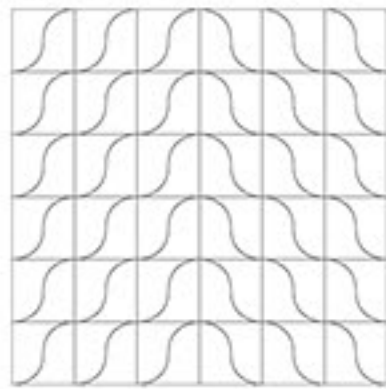
WHOLE DESIGN 01



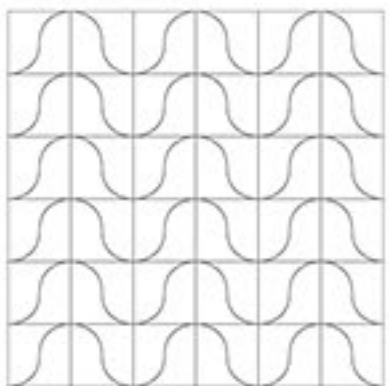
WHOLE DESIGN 02



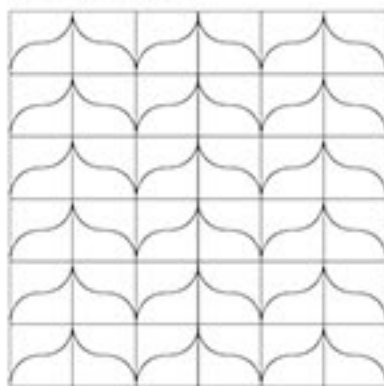
WHOLE DESIGN 03



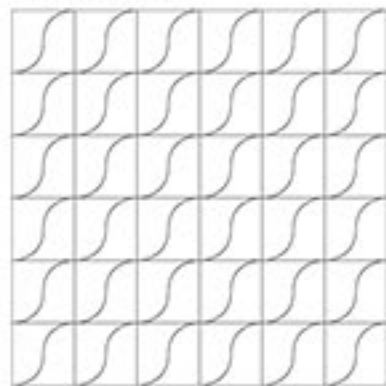
WHOLE DESIGN 04



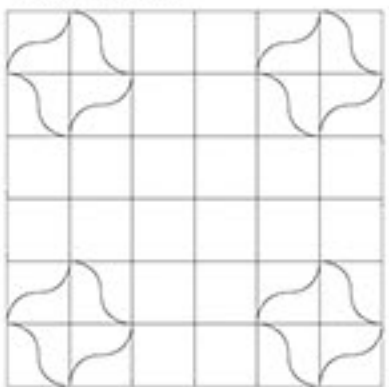
WHOLE DESIGN 05



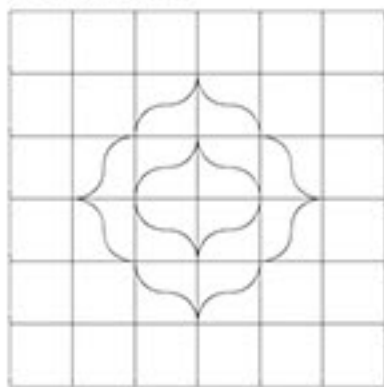
WHOLE DESIGN 06



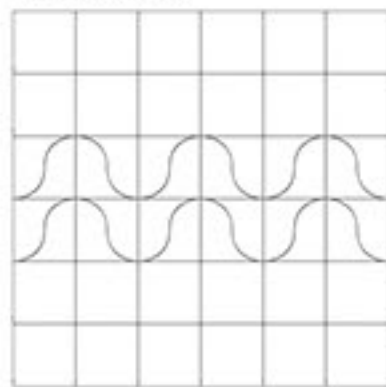
WHOLE DESIGN 07



WHOLE DESIGN 08



WHOLE DESIGN 09



名称：NCZH-004 (NAME: NCZH-004)

尺寸：150X150MM (SIZE: 150X150MM)

数量：30片/箱 (QUANTITY: 30 PIECES/CASE)

重量：约15KG/箱 (WEIGHT: ABOUT 15 KG/BOX)

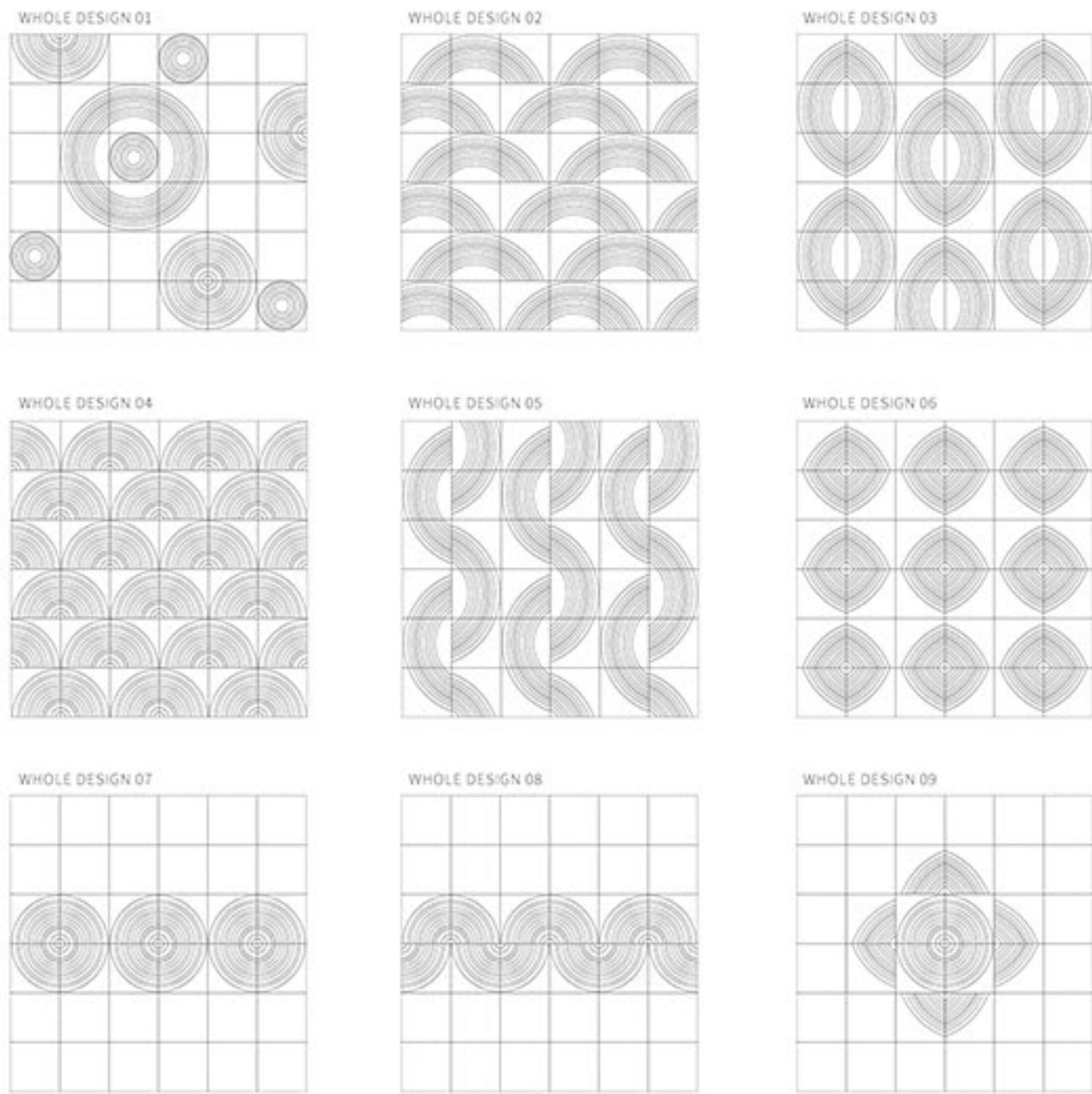
M<sup>2</sup>：约44片/平方 (M<sup>2</sup>: ABOUT 44 PIECES/SQUARE)

厚度：约13MM (THICKNESS: ABOUT 13MM)





NCZH-002      NCZH-001 (四合一混装)



名称：NCZH-002/001 (NAME: NCZH-002/001)

尺寸：150X150MM (SIZE: 150X150MM)

数量：30 片 / 箱 (QUANTITY: 30 PIECES/CASE)

重量：约 15KG / 箱 (WEIGHT: ABOUT 15 KG/BOX)

M<sup>2</sup>：约 44 片 / 平方 (M<sup>2</sup>: ABOUT 44 PIECES/SQUARE)

厚度：约 13MM (THICKNESS: ABOUT 13MM)

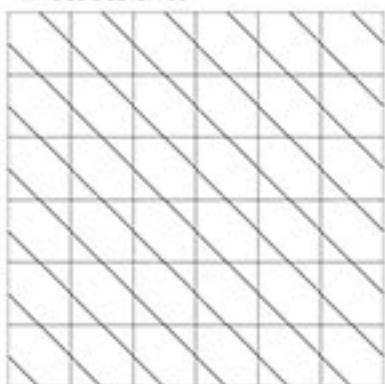




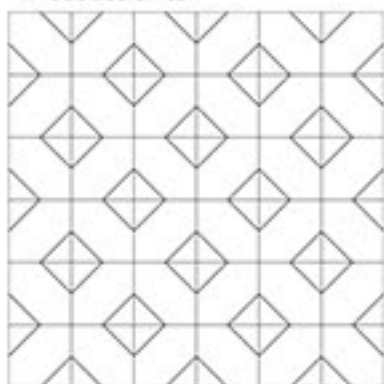


NCZH-007

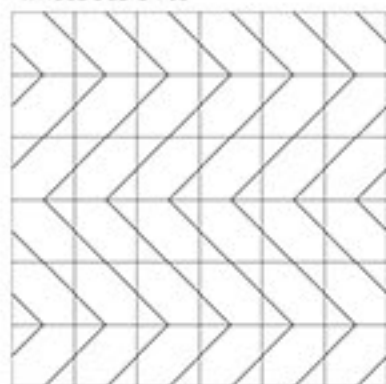
WHOLE DESIGN 01



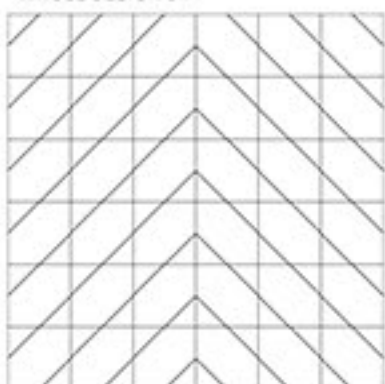
WHOLE DESIGN 02



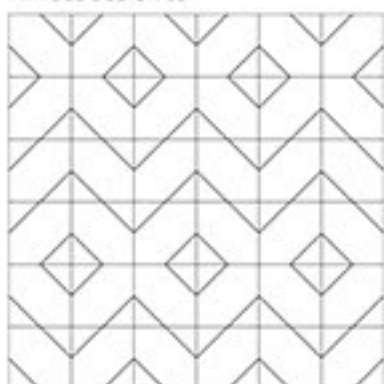
WHOLE DESIGN 03



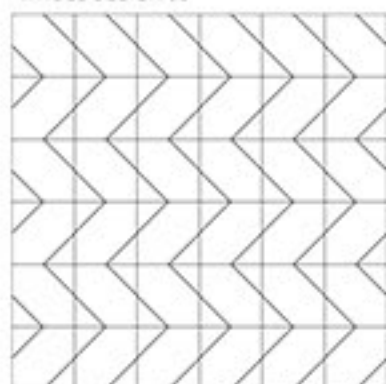
WHOLE DESIGN 04



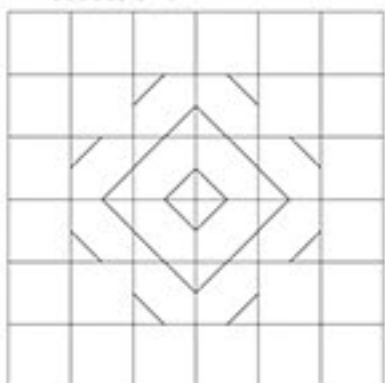
WHOLE DESIGN 05



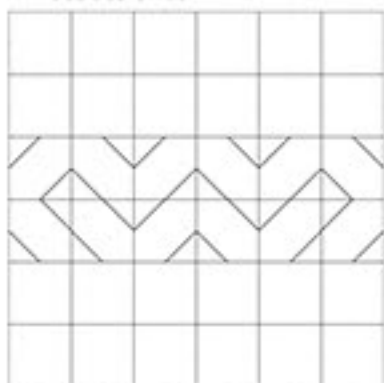
WHOLE DESIGN 06



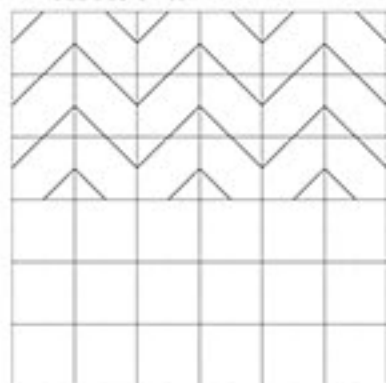
WHOLE DESIGN 07



WHOLE DESIGN 08



WHOLE DESIGN 09



名称：NCZH-07 (NAME: NCZH-007)

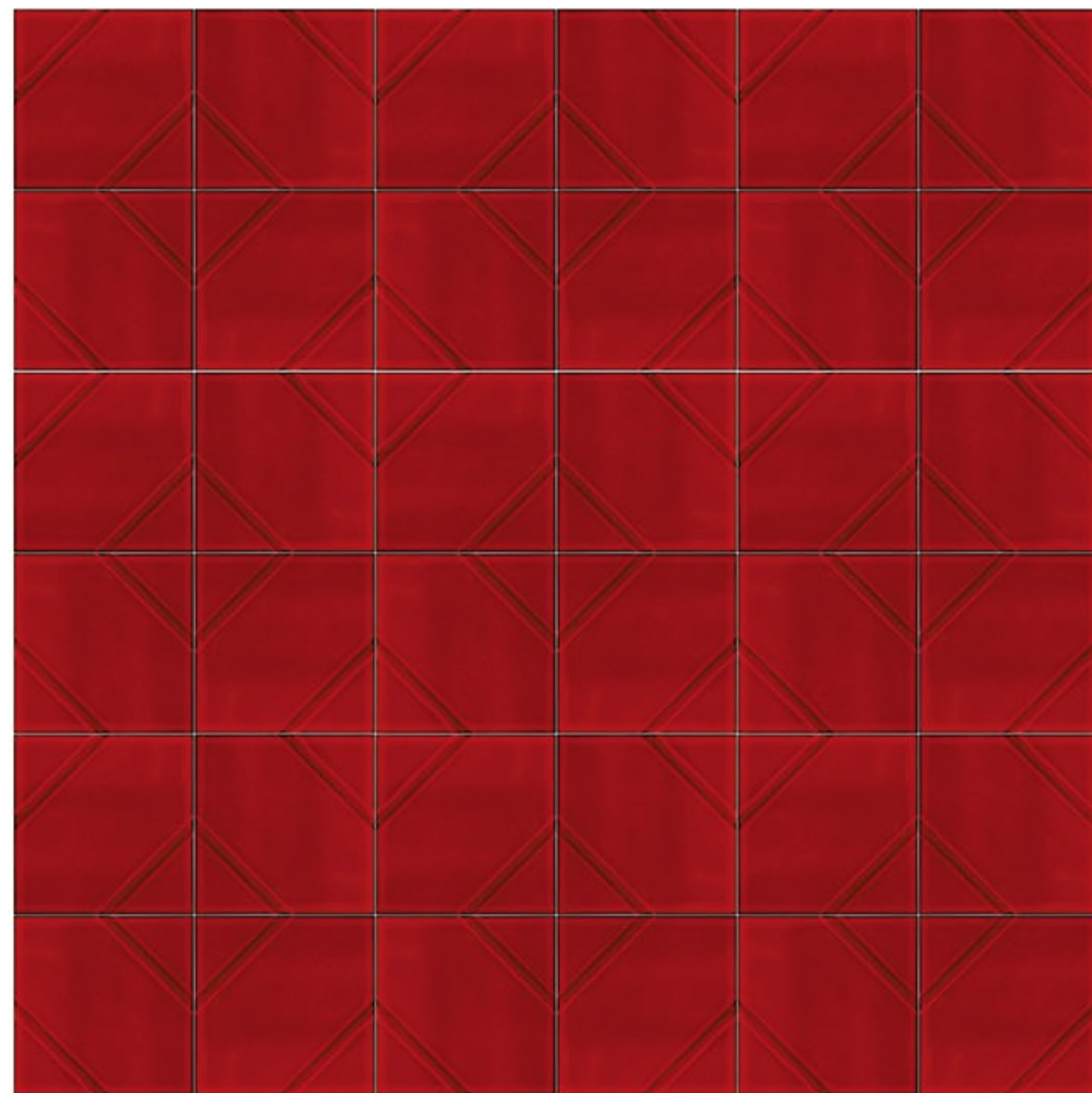
尺寸：150X150MM (SIZE: 150X150MM)

数量：30片/箱 (QUANTITY: 30 PIECES/CASE)

重量：约15KG/箱 (WEIGHT: ABOUT 15 KG/BOX)

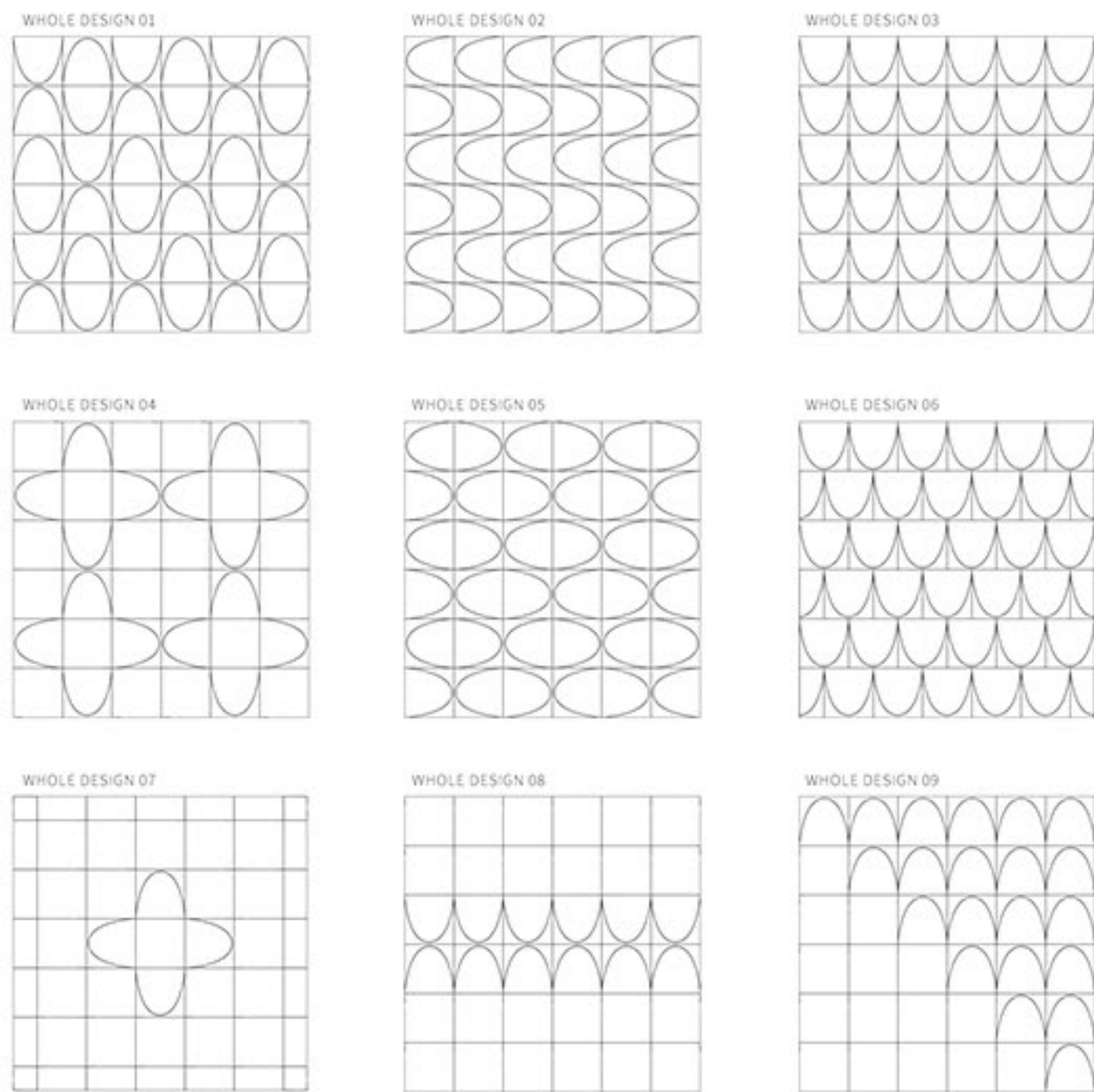
M<sup>2</sup>：约44片/平方 (M<sup>2</sup>: ABOUT 44 PIECES/SQUARE)

厚度：约13MM (THICKNESS: ABOUT 13MM)





NCZH-003



名称：NCZH-003 (NAME: NCZH-003)

尺寸：150X150MM (SIZE: 150X150MM)

数量：30片 / 箱 (QUANTITY: 30PIECES/CASE)

重量：约 15KG / 箱 (WEIGHT: ABOUT 15KG/BOX)

M<sup>2</sup>：约 44片 / 平方 (M<sup>2</sup>: ABOUT 44 PIECES/SQUARE)

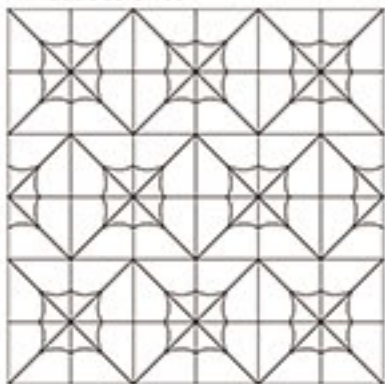
厚度：约 13MM (THICKNESS: ABOUT 13MM)



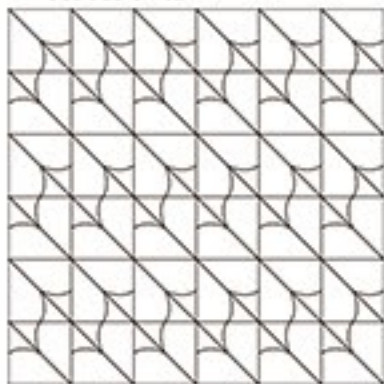


NCZH-005

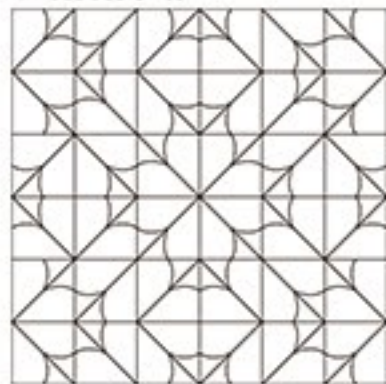
WHOLE DESIGN 01



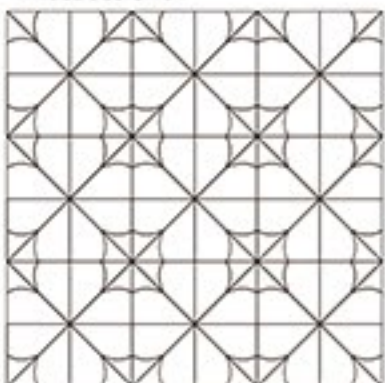
WHOLE DESIGN 02



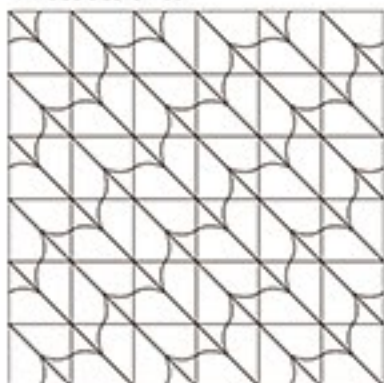
WHOLE DESIGN 03



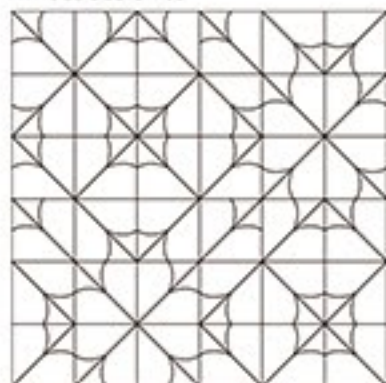
WHOLE DESIGN 04



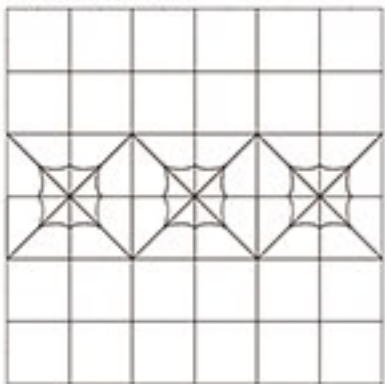
WHOLE DESIGN 05



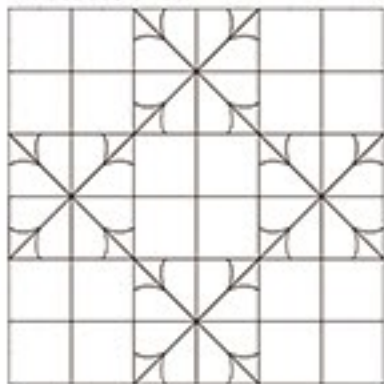
WHOLE DESIGN 06



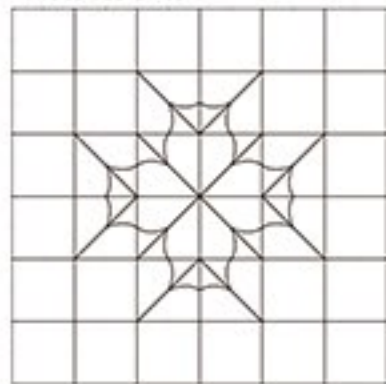
WHOLE DESIGN 07



WHOLE DESIGN 08



WHOLE DESIGN 09



名称：NCZH-005 (NAME:NCZH-005)

尺寸：150X150MM (SIZE: 150X150MM)

数量：30片/箱 (QUANTITY: 30 PIECES/CASE)

重量：约15KG/箱 (WEIGHT: ABOUT 15 KG/BOX)

M<sup>2</sup>：约44片/平方 (M<sup>2</sup>: ABOUT 44 PIECES/SQUARE)

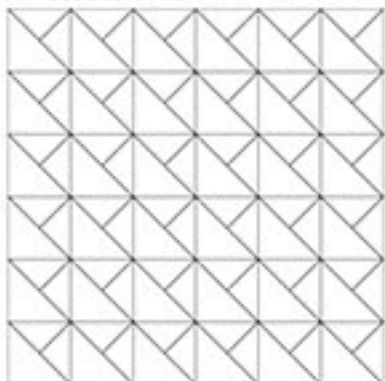
厚度：约13MM (THICKNESS: ABOUT 13MM)



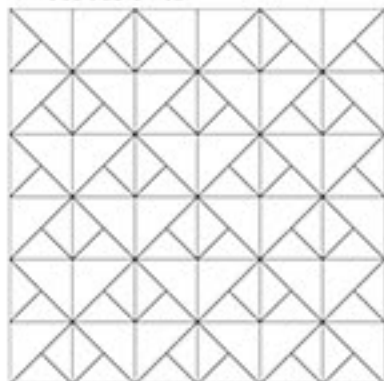


NCZH-006

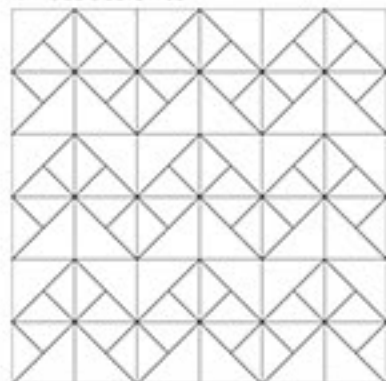
WHOLE DESIGN 01



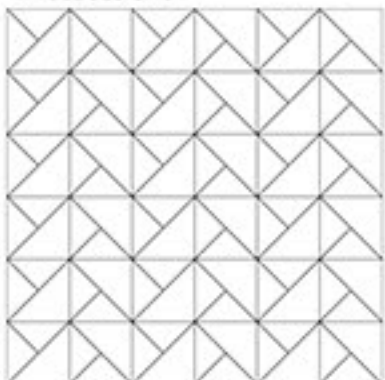
WHOLE DESIGN 02



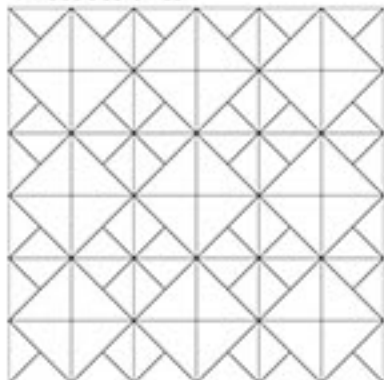
WHOLE DESIGN 03



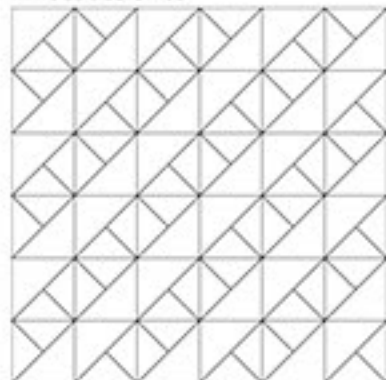
WHOLE DESIGN 04



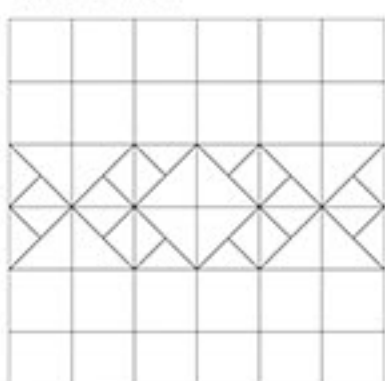
WHOLE DESIGN 05



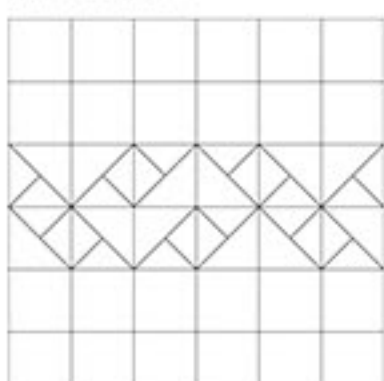
WHOLE DESIGN 06



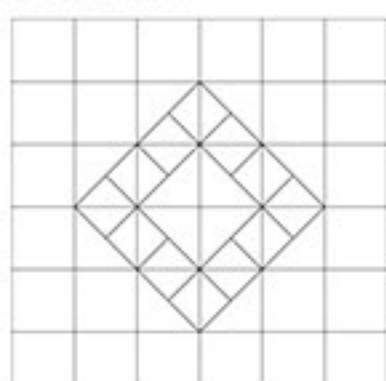
WHOLE DESIGN 07



WHOLE DESIGN 08



WHOLE DESIGN 09



名称：NCZH-006 (NAME: NCZH-006)

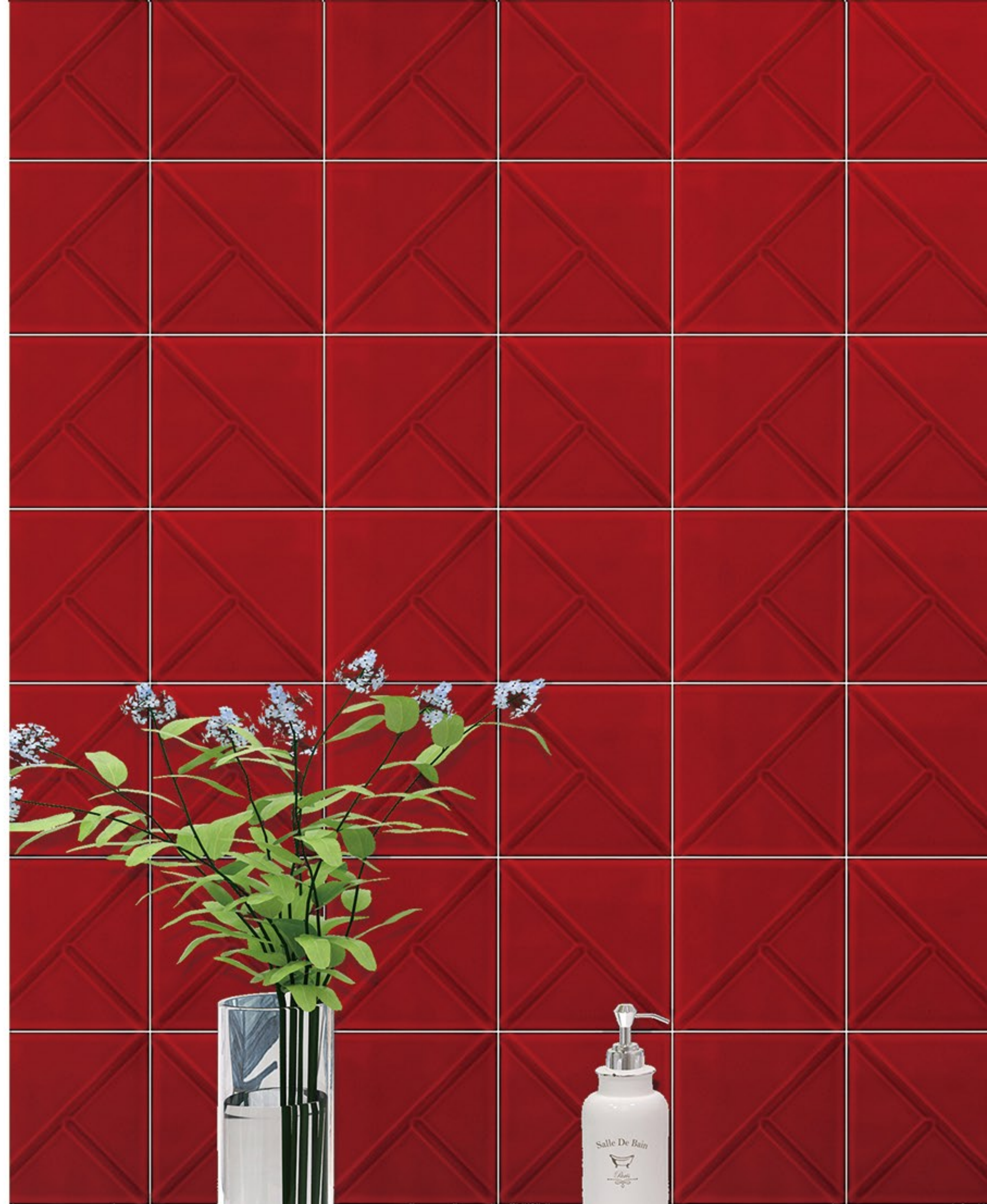
尺寸：150X150MM (SIZE: 150X150MM)

数量：30片 / 箱 (QUANTITY: 30 PIECES/CASE)

重量：约 15KG / 箱 (WEIGHT: ABOUT 15 KG/BOX)

M<sup>2</sup>：约 44片 / 平方 (M<sup>2</sup>: ABOUT 44 PIECES/SQUARE)

厚度：约 13MM (THICKNESS: ABOUT 13MM)

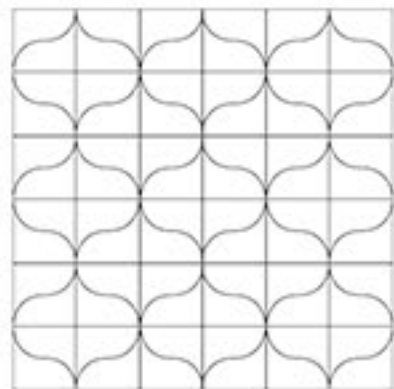




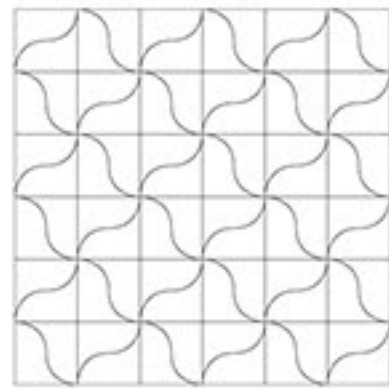
NCLB-011A

NCLB-011B

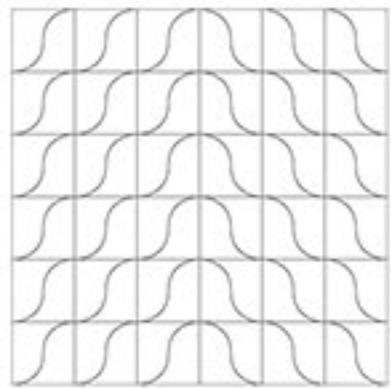
WHOLE DESIGN 01



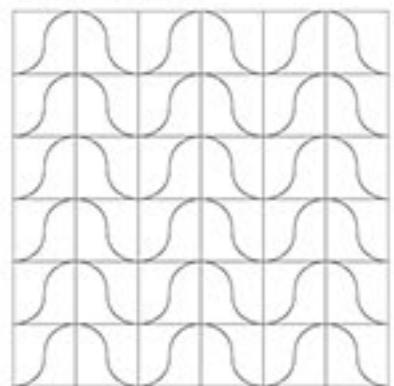
WHOLE DESIGN 02



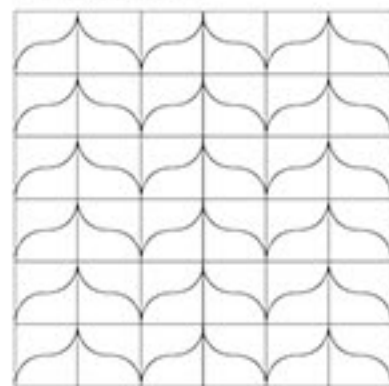
WHOLE DESIGN 03



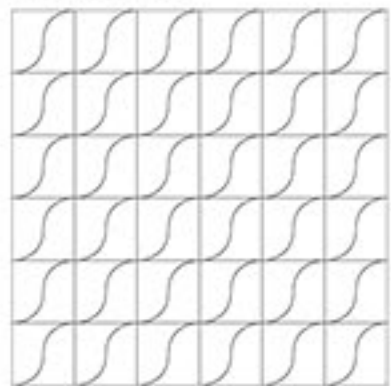
WHOLE DESIGN 04



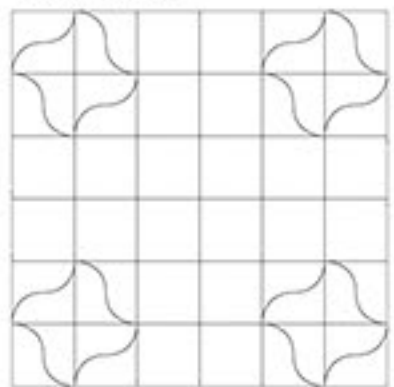
WHOLE DESIGN 05



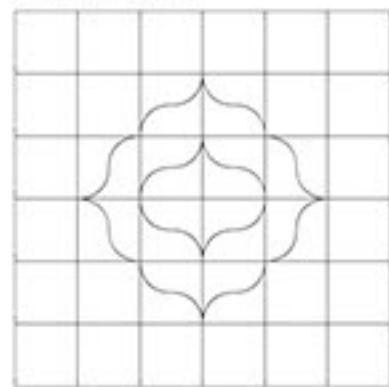
WHOLE DESIGN 06



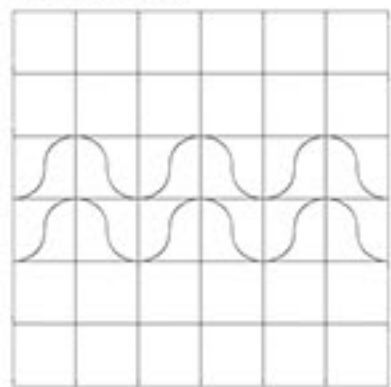
WHOLE DESIGN 07



WHOLE DESIGN 08



WHOLE DESIGN 09



名称：NCLB-011 (NAME: NCLB-011)

尺寸：150X150MM (SIZE: 150X150MM)

数量：30片/箱 (QUANTITY: 30 PIECES/CASE)

重量：约15KG/箱 (WEIGHT: ABOUT 15 KG/BOX)

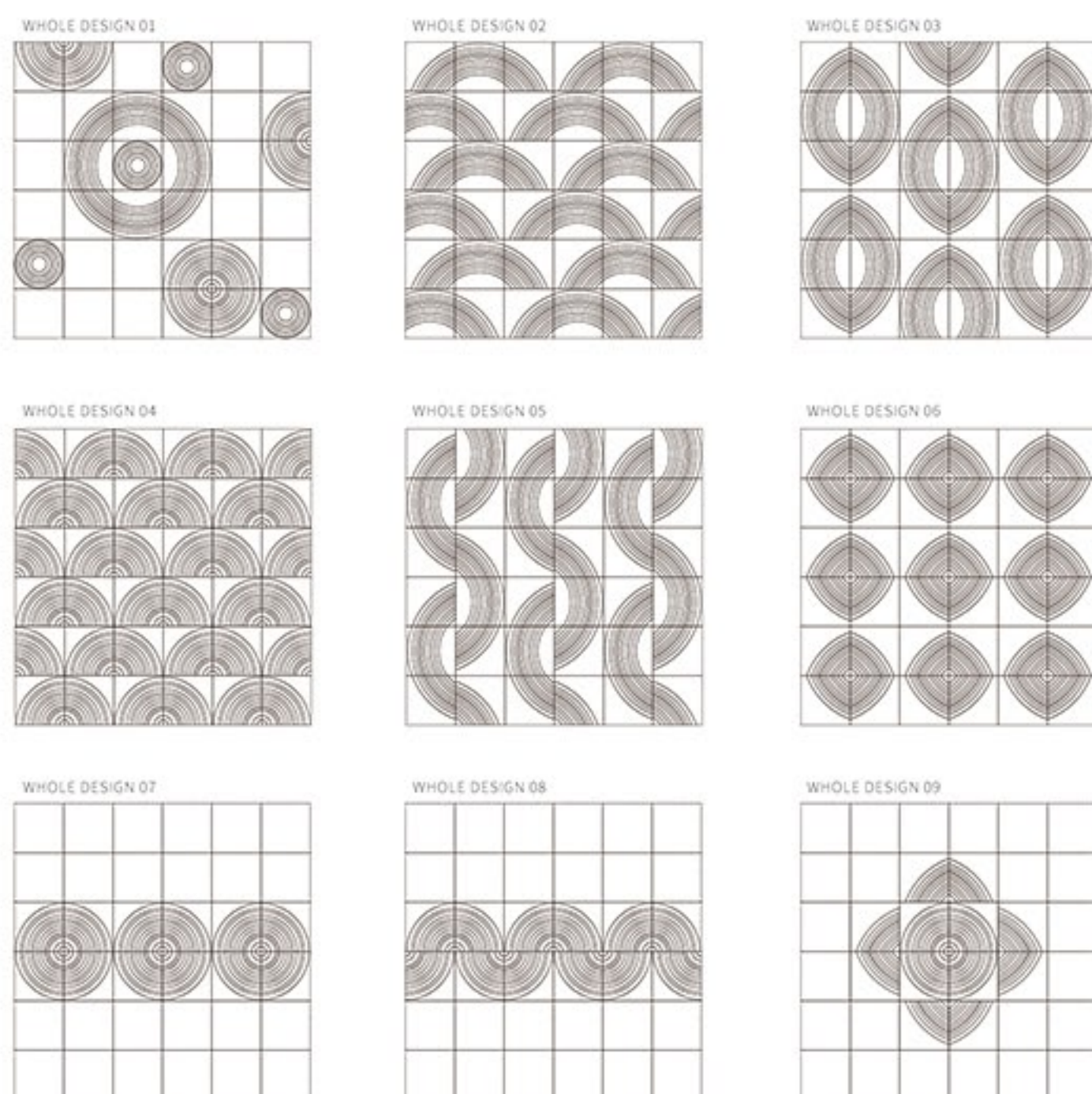
M<sup>2</sup>：约44片/平方 (M<sup>2</sup>: ABOUT 44 PIECES/SQUARE)

厚度：约13MM (THICKNESS: ABOUT 13MM)





NCLB-009      NCLB-008 (四合一混装)



名称：NCLB-009/008 (NAME: NCLB-009/008)

尺寸：150X150MM (SIZE: 150X150MM)

数量：30片/箱 (QUANTITY: 30 PIECES/CASE)

重量：约 15KG/箱 (WEIGHT: ABOUT 15 KG/BOX)

M<sup>2</sup>：约 44片/平方 (M<sup>2</sup>: ABOUT 44 PIECES/SQUARE)

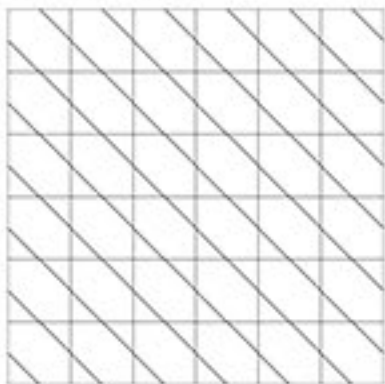
厚度：约 13MM (THICKNESS: ABOUT 13MM)



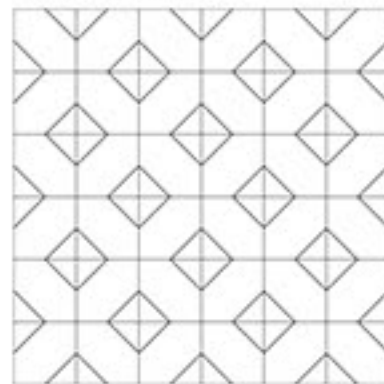


NCLB-014

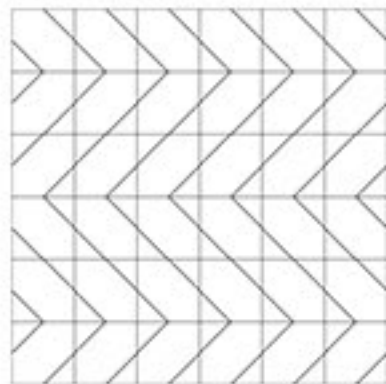
WHOLE DESIGN 01



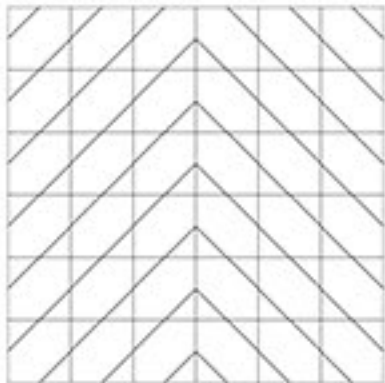
WHOLE DESIGN 02



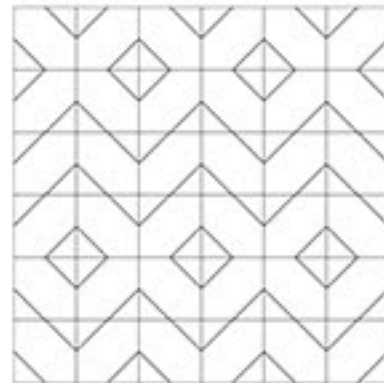
WHOLE DESIGN 03



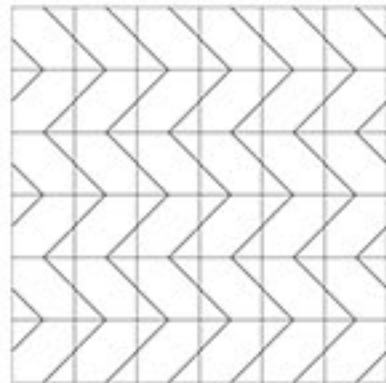
WHOLE DESIGN 04



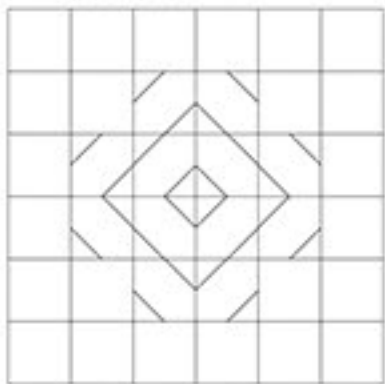
WHOLE DESIGN 05



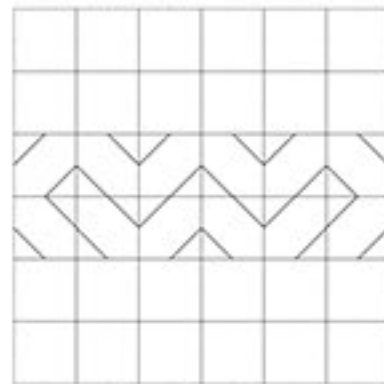
WHOLE DESIGN 06



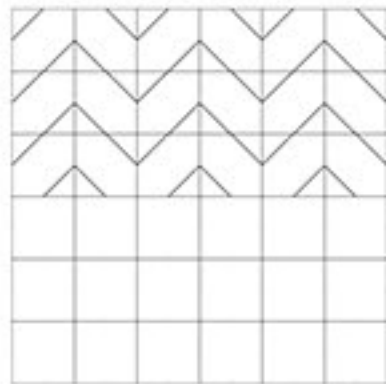
WHOLE DESIGN 07



WHOLE DESIGN 08



WHOLE DESIGN 09



名称：NCLB-014 (NAME: NCLB-014)

尺寸：150X150MM (SIZE: 150X150MM)

数量：30片/箱 (QUANTITY: 30 PIECES/CASE)

重量：约15KG/箱 (WEIGHT: ABOUT 15 KG/BOX)

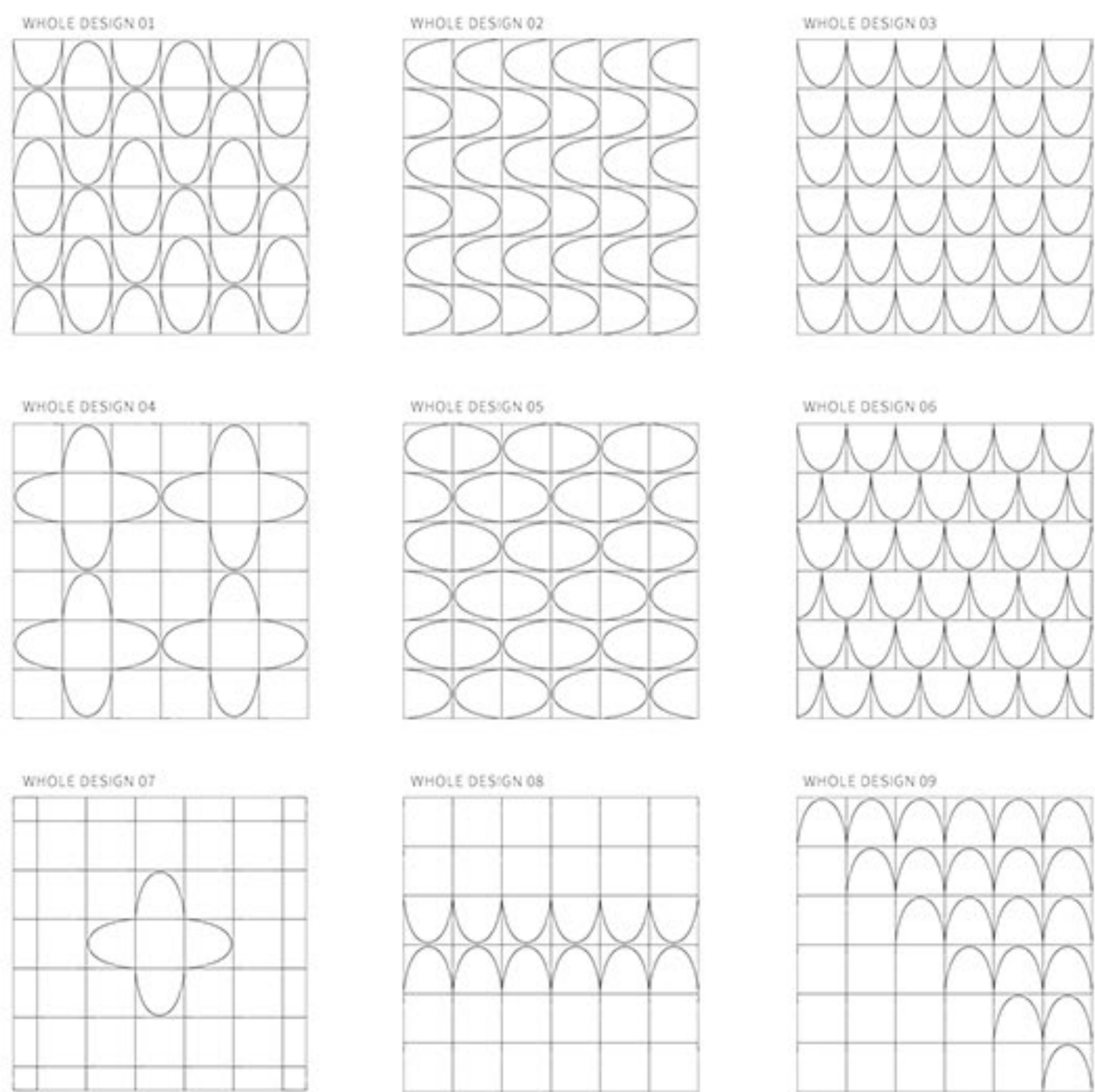
M<sup>2</sup>：约44片/平方 (M<sup>2</sup>: ABOUT 44 PIECES/SQUARE)

厚度：约13MM (THICKNESS: ABOUT 13MM)





NCLB-010



名称：NCLB-010 (NAME: NCLB-010)  
尺寸：150X150MM (SIZE: 150X150MM)  
数量：30片 / 箱 (QUANTITY: 30PIECES/CASE)  
重量：约 15KG / 箱 (WEIGHT: ABOUT 15KG/BOX)  
M<sup>2</sup>：约 44片 / 平方 (M<sup>2</sup>: ABOUT 44 PIECES/SQUARE)  
厚度：约 13MM (THICKNESS: ABOUT 13MM)

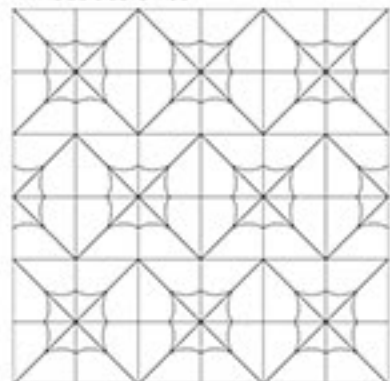




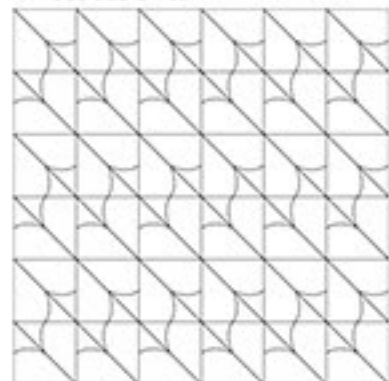


NCLB-012

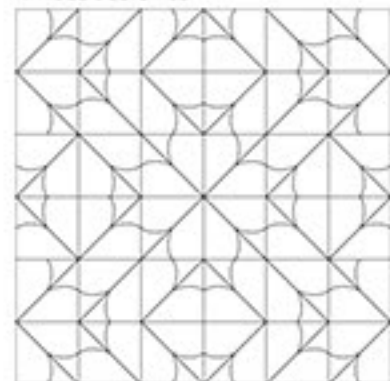
WHOLE DESIGN 01



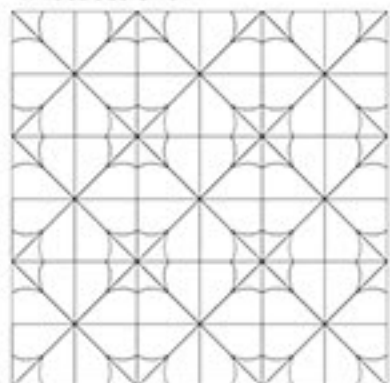
WHOLE DESIGN 02



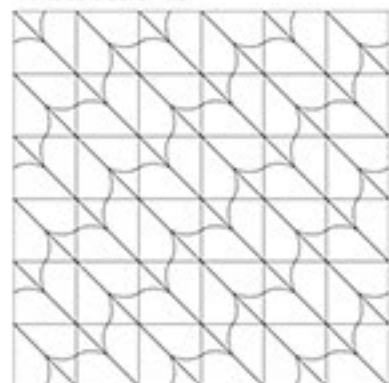
WHOLE DESIGN 03



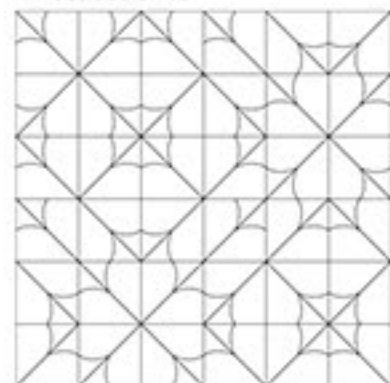
WHOLE DESIGN 04



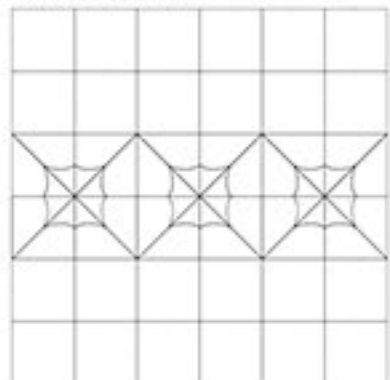
WHOLE DESIGN 05



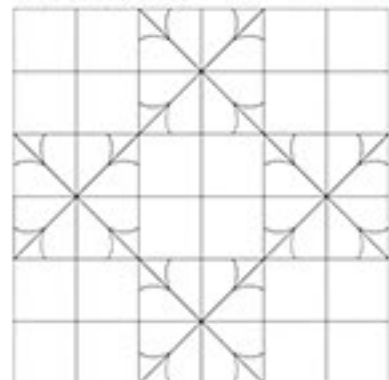
WHOLE DESIGN 06



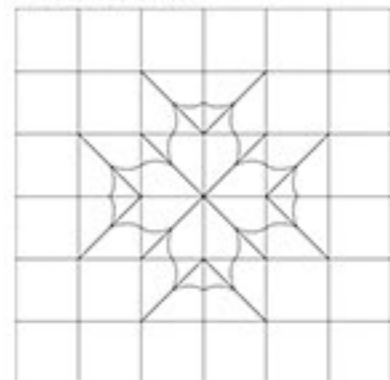
WHOLE DESIGN 07



WHOLE DESIGN 08



WHOLE DESIGN 09



名称：NCLB-012 (NAME:NCLB-012)

尺寸：150X150MM (SIZE: 150X150MM)

数量：30片/箱 (QUANTITY: 30 PIECES/CASE)

重量：约15KG/箱 (WEIGHT: ABOUT 15 KG/BOX)

M<sup>2</sup>：约44片/平方 (M<sup>2</sup>: ABOUT 44 PIECES/SQUARE)

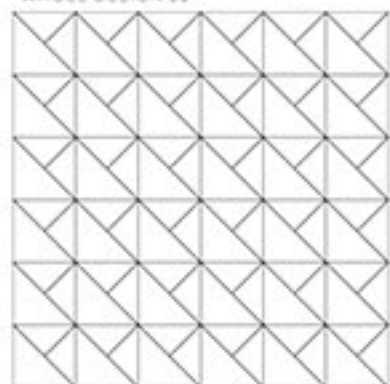
厚度：约13MM (THICKNESS: ABOUT 13MM)



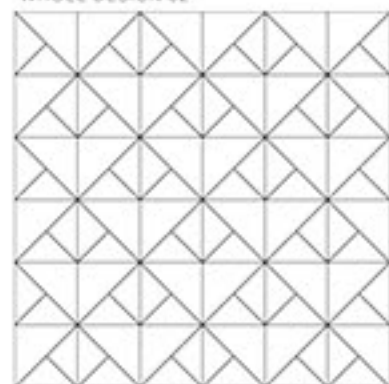


NCLB-013

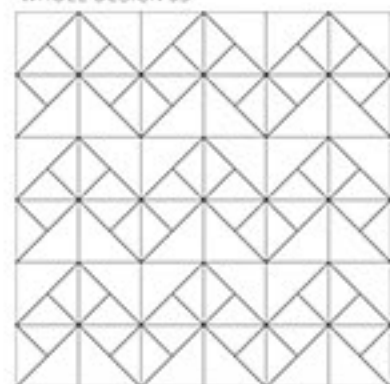
WHOLE DESIGN 01



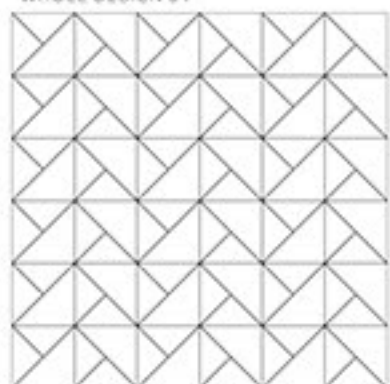
WHOLE DESIGN 02



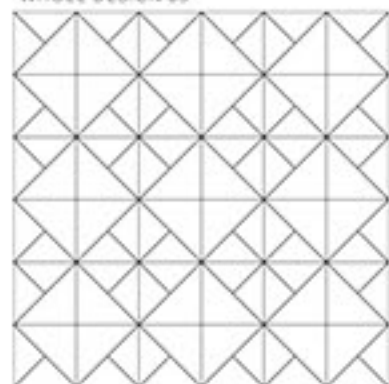
WHOLE DESIGN 03



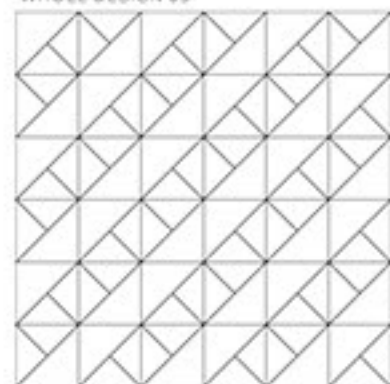
WHOLE DESIGN 04



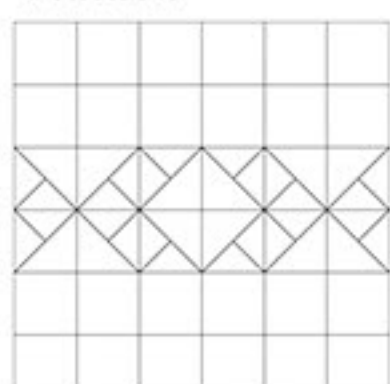
WHOLE DESIGN 05



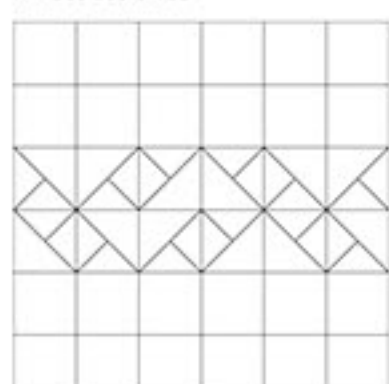
WHOLE DESIGN 06



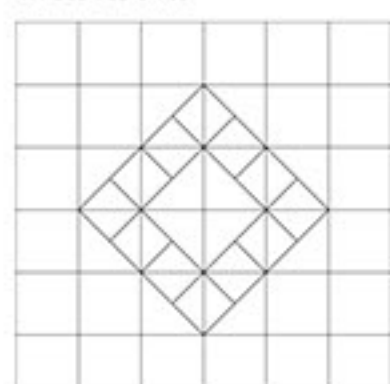
WHOLE DESIGN 07



WHOLE DESIGN 08



WHOLE DESIGN 09



名称：NCLB-013 (NAME: NCLB-013)

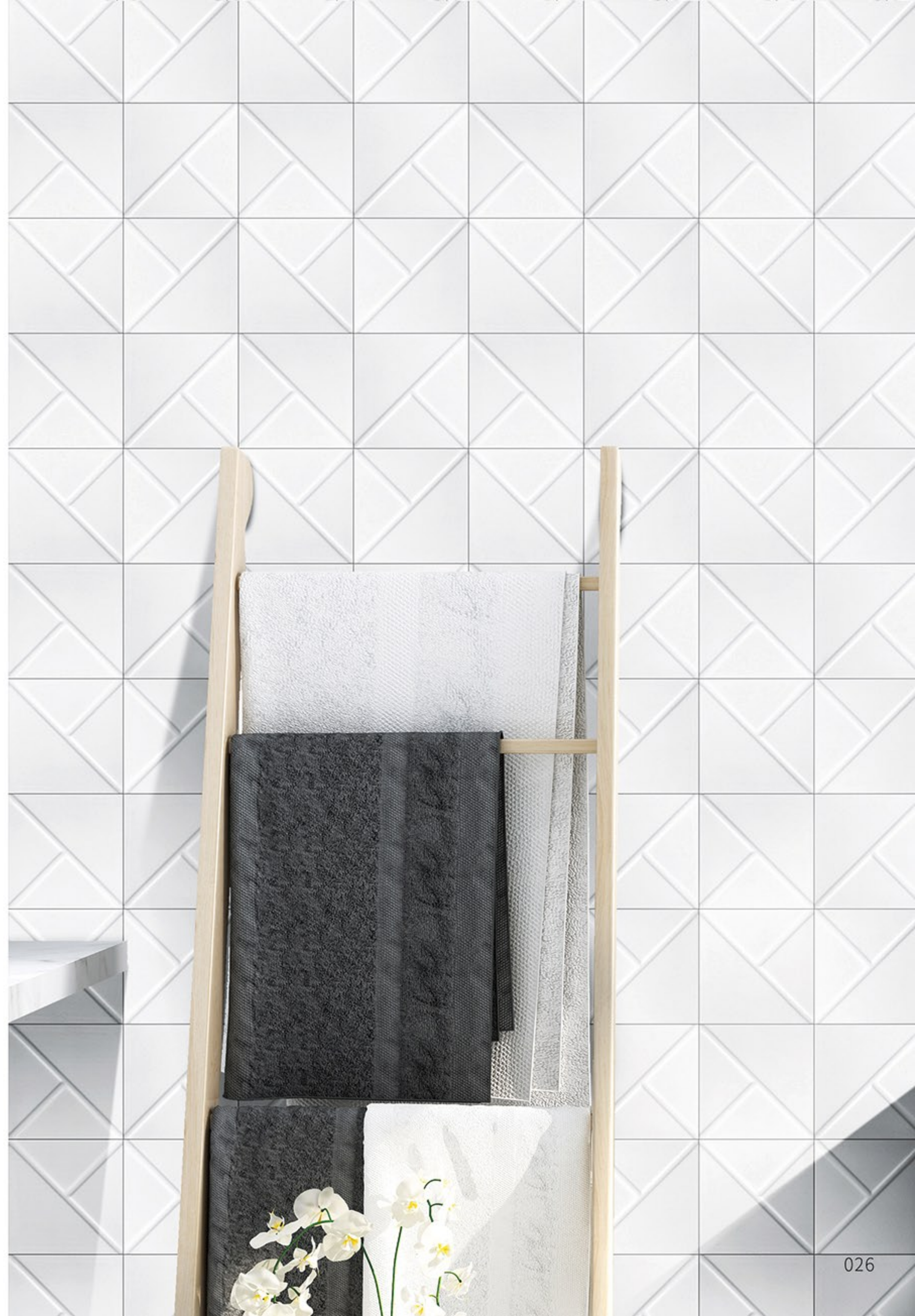
尺寸：150X150MM (SIZE: 150X150MM)

数量：30片/箱 (QUANTITY: 30 PIECES/CASE)

重量：约15KG/箱 (WEIGHT: ABOUT 15 KG/BOX)

M<sup>2</sup>：约44片/平方 (M<sup>2</sup>: ABOUT 44 PIECES/SQUARE)

厚度：约13MM (THICKNESS: ABOUT 13MM)





NCQL-028



NCQL-029(四合一混装)

尺寸：150X150MM (SIZE: 150X150MM)

数量：30片 / 箱 (QUANTITY: 30 PIECES/CASE)

重量：约 15KG / 箱 (WEIGHT: ABOUT 15 KG/BOX)

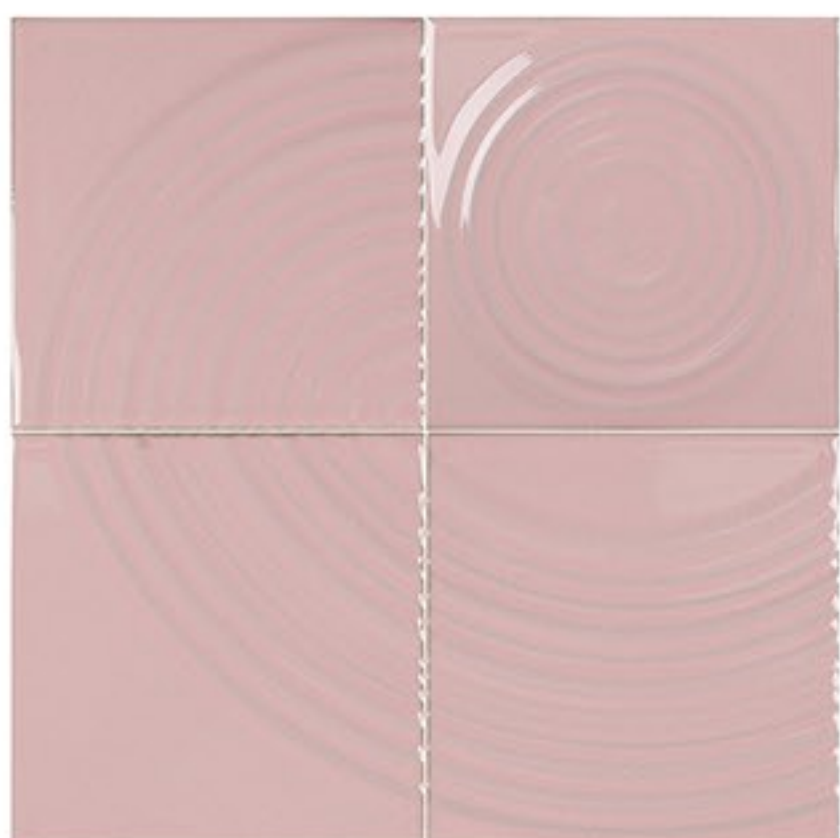
M<sup>2</sup>：约 44片 / 平方 (M<sup>2</sup>: ABOUT 44 PIECES/SQUARE)

厚度：约 13MM (THICKNESS: ABOUT 13MM)





NCQL-026



NCQL-027(四合一混装)

尺寸：150X150MM (SIZE: 150X150MM)

数量：30片 / 箱 (QUANTITY: 30 PIECES/CASE)

重量：约 15KG / 箱 (WEIGHT: ABOUT 15 KG/BOX)

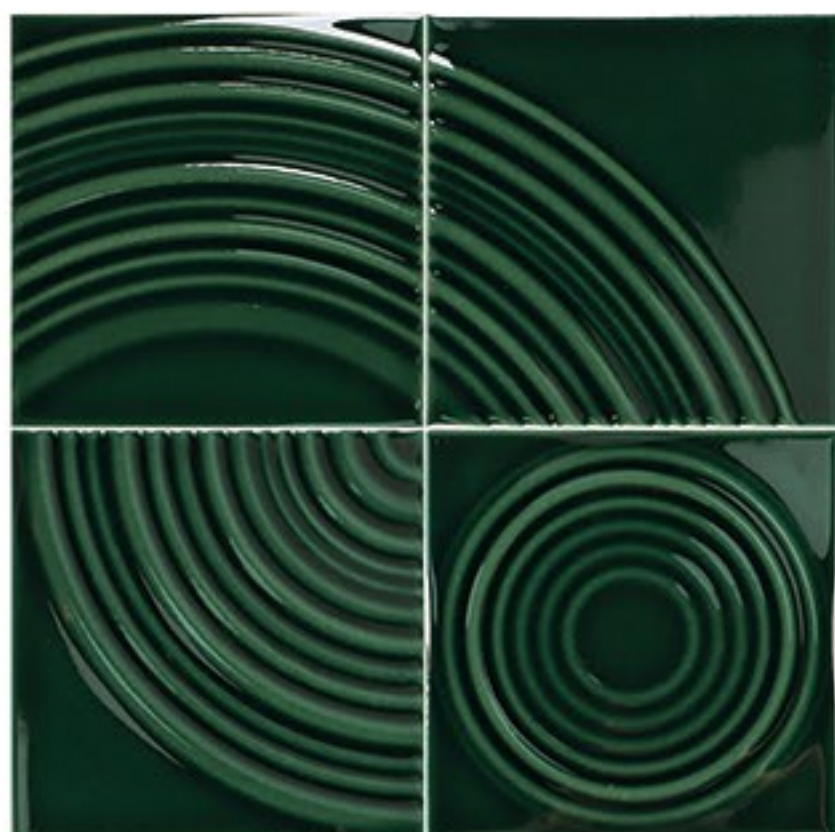
M<sup>2</sup>：约 44片 / 平方 (M<sup>2</sup>: ABOUT 44 PIECES/SQUARE)

厚度：约 13MM (THICKNESS: ABOUT 13MM)





NCML-022



NCML-023(四合一混装)

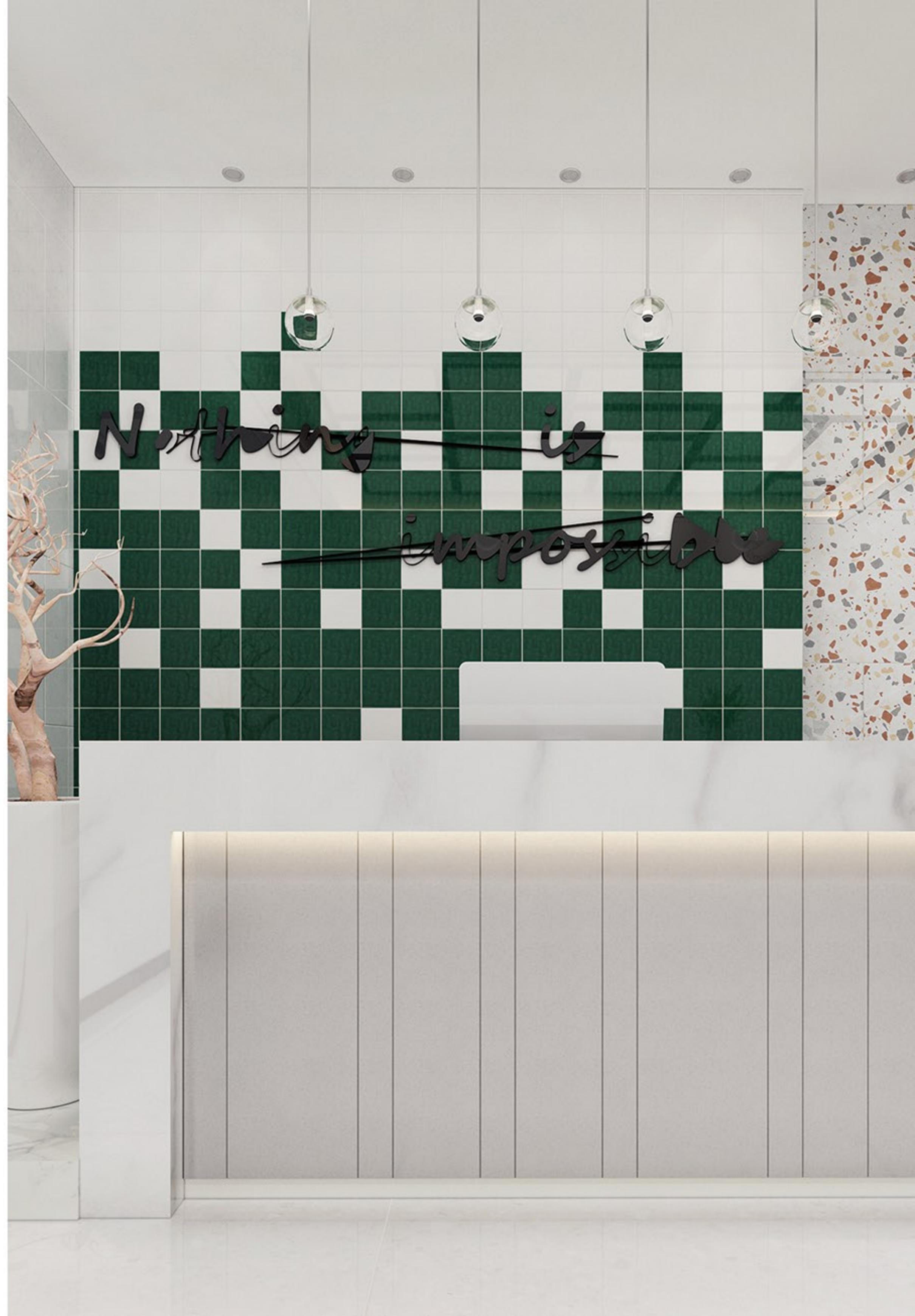
尺寸：150X150MM (SIZE: 150X150MM)

数量：30片 / 箱 (QUANTITY: 30 PIECES/CASE)

重量：约 15KG / 箱 (WEIGHT: ABOUT 15 KG/BOX)

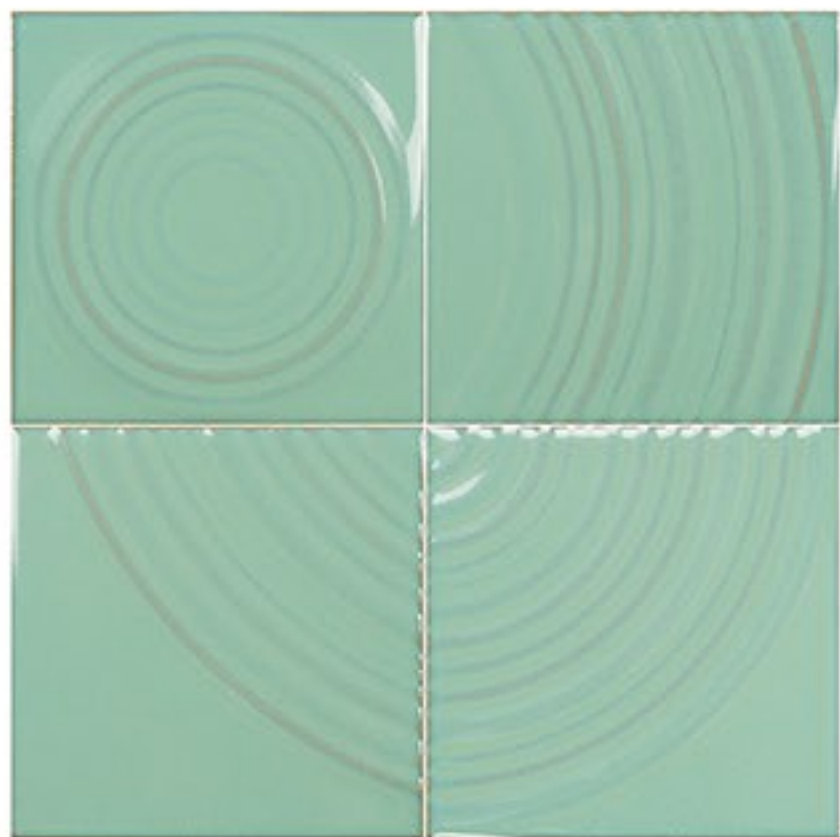
M<sup>2</sup>：约 44片 / 平方 (M<sup>2</sup>: ABOUT 44 PIECES/SQUARE)

厚度：约 13MM (THICKNESS: ABOUT 13MM)





NCQL-015



NCQL-016(四合一混装)

尺寸：150X150MM (SIZE: 150X150MM)

数量：30片 / 箱 (QUANTITY: 30 PIECES/CASE)

重量：约 15KG / 箱 (WEIGHT: ABOUT 15 KG/BOX)

M<sup>2</sup>：约 44片 / 平方 (M<sup>2</sup>: ABOUT 44 PIECES/SQUARE)

厚度：约 13MM (THICKNESS: ABOUT 13MM)





## 时代气质 AGE TEMPERAMENT

现代气息凝聚的空间里

明暗相错叠合

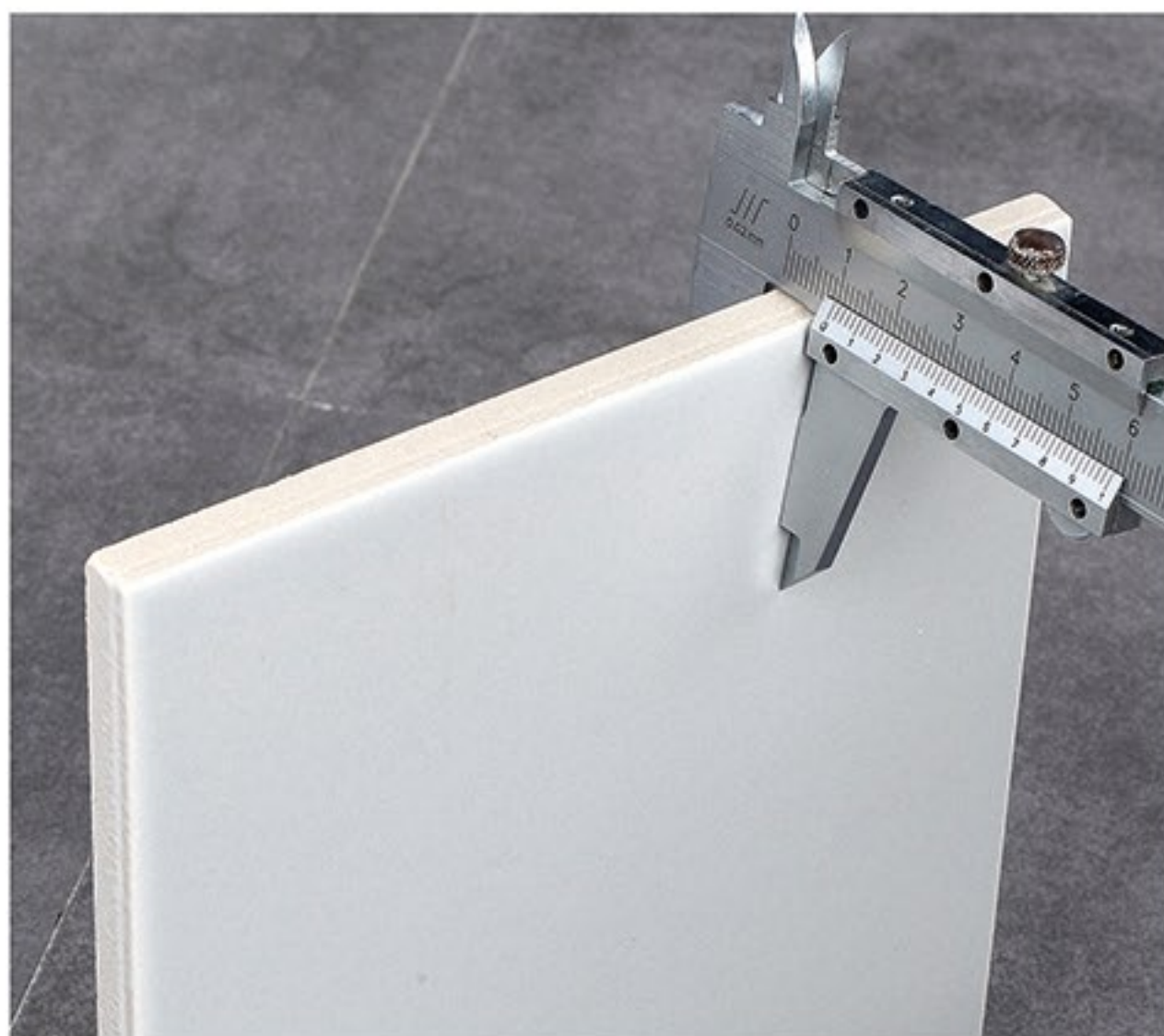
深浅错综融和

精致

幽雅的场景

从形式到功能

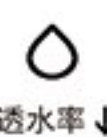
都展现着那与众不同的时代气质



## 全瓷加厚



密度↑



透水率↓



触感↑



亮度↓



抗裂↑



150B



X-1503F



X-1503HS

名称：厚胚小方砖 (NAME: THICK EMBRYO SMALL SQUARE BRICK)

尺寸：150X150MM (SIZE: 150X150MM)

数量：32片 / 箱 (QUANTITY: 32 PIECES/CASE)

重量：约 17KG / 箱 (WEIGHT: ABOUT 17KG/BOX)

M<sup>2</sup>：约 45片 / 平方 (M<sup>2</sup>: ABOUT 45 PIECES/SQUARE)

厚度：约 10MM (THICKNESS: ABOUT 10MM)





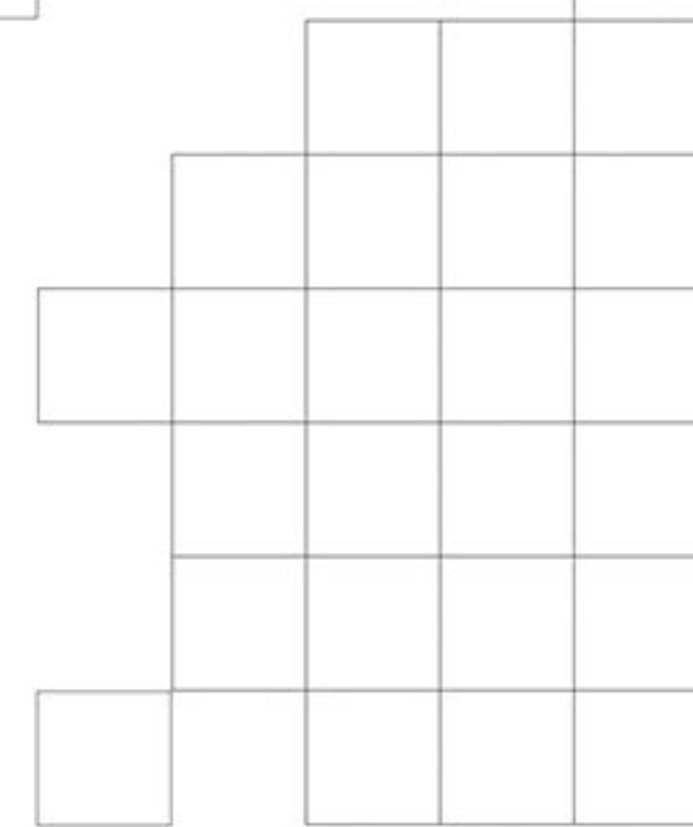
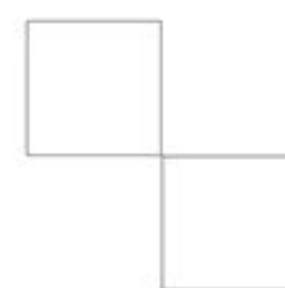


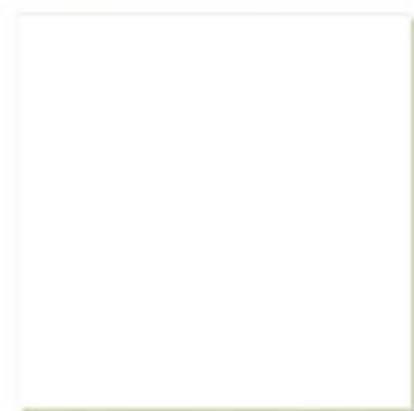
全瓷加厚





糖果系列  
Candy series





200-F001



TGY200-H

名称：糖果釉花砖 (NAME: CANDY GLAZED TILES)

尺寸：200X200MM (SIZE: 200X200MM)

数量：25片/箱 (QUANTITY: 25 PIECES/CASE)

重量：约21KG/箱 (WEIGHT: ABOUT 21KG/BOX)

M<sup>2</sup>：约25片/平方 (M<sup>2</sup>: ABOUT 25 PIECES/SQUARE)

厚度：约10MM (THICKNESS: ABOUT 10MM)





## 糖果釉

顾名思义是釉面有着砂糖般微细颗粒质感的瓷砖。

采用 3D 喷墨打印技术复刻龟背竹色调及纹理。

并使用西班牙进口再经企业自主研发优化提升的釉料，

经过特殊的淋釉程序，1200 度高温烧成。

砂糖般细微的颗粒均匀分布于砖面，在灯光的作用下，

闪闪发亮，触摸起来则手感细腻，有如细沙滚动，

具有天然沙岩质感，从而达到一种特殊的装饰效果。





JD001



TGY230-H

名称：糖果釉六角砖 (NAME: CANDY GLAZED HEXAGONAL BRICK)

尺寸：200X230MM (SIZE: 200X230MM)

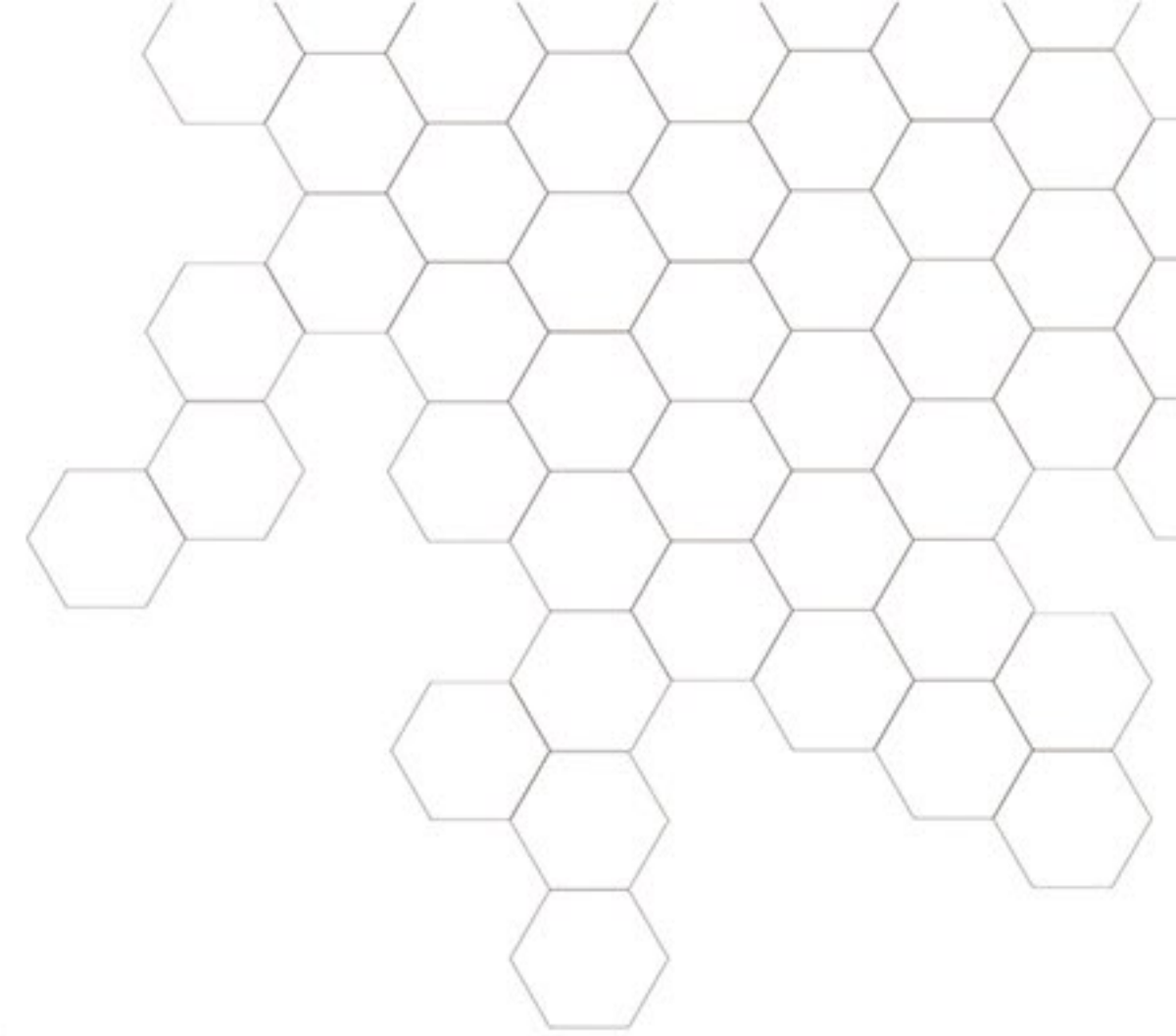
数量：29片 / 箱 (QUANTITY: 29 PIECES/CASE)

重量：约 21KG / 箱 (WEIGHT: ABOUT 21KG/BOX)

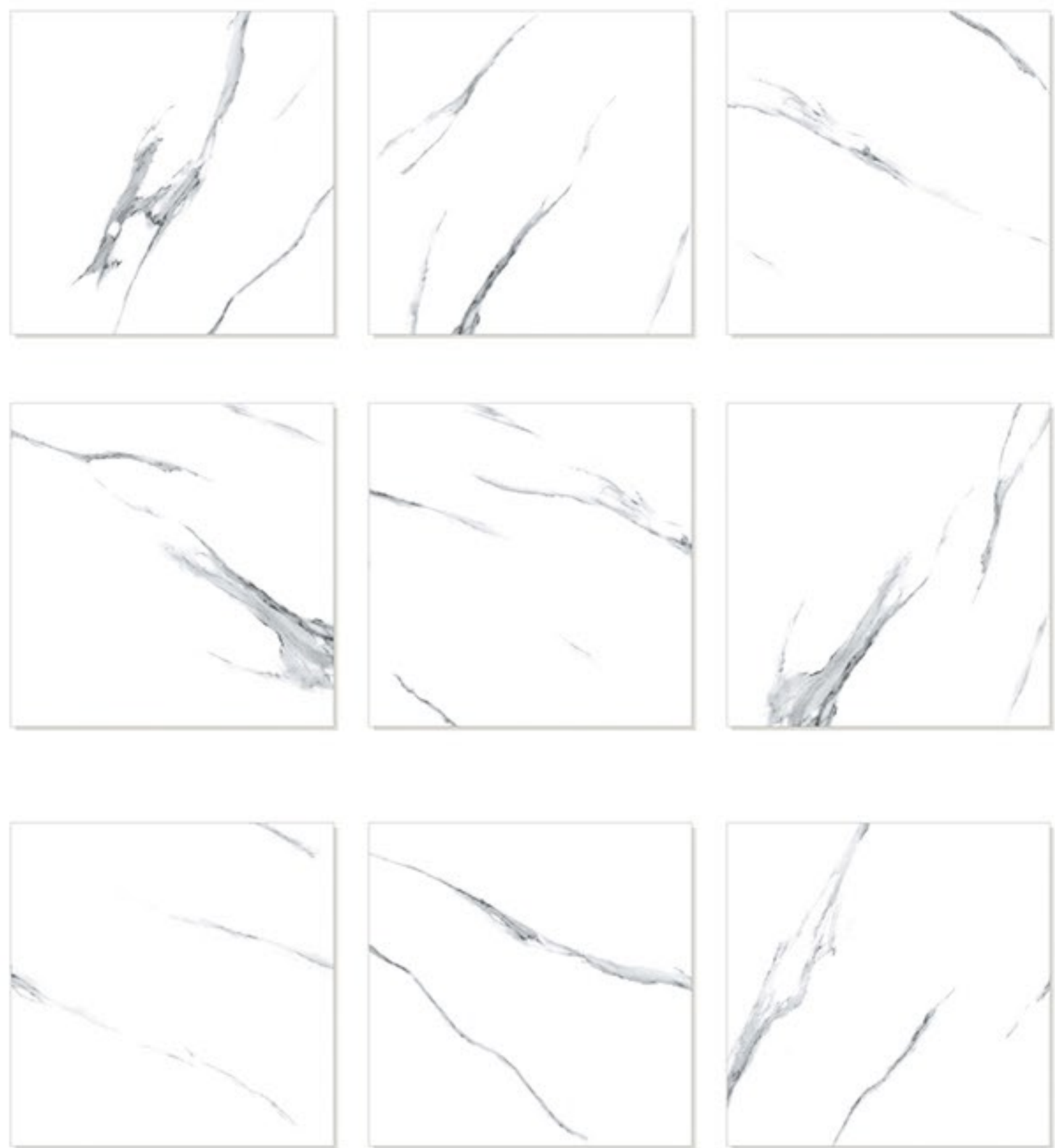
M<sup>2</sup>：约 29片 / 平方 (M<sup>2</sup>: ABOUT 29 PIECES/SQUARE)

厚度：约 10MM (THICKNESS: ABOUT 10MM)





## 搭配产品



名称：爵士白 (NAME:JAZZ WHITE)

尺寸：600X600MM (SIZE: 600X600MM)

数量：4片 / 箱 (QUANTITY: 4 PIECES/CASE)

重量：约 -KG / 箱 (WEIGHT: ABOUT -KG/BOX)

M<sup>2</sup>：约 2.8片 / 平方 (M<sup>2</sup>: ABOUT 2.8 PIECES/SQUARE)

厚度：约 10MM (THICKNESS: ABOUT 10MM)





JD001



TGY230-H2

名称：糖果釉六角砖 (NAME: CANDY GLAZED HEXAGONAL BRICK)

尺寸：200X230MM (SIZE: 200X230MM)

数量：29片/箱 (QUANTITY: 29 PIECES/CASE)

重量：约21KG/箱 (WEIGHT: ABOUT 21KG/BOX)

M<sup>2</sup>：约29片/平方 (M<sup>2</sup>: ABOUT 29 PIECES/SQUARE)

厚度：约10MM (THICKNESS: ABOUT 10MM)







JD001



TGY230-H3

名称：糖果釉六角砖 (NAME: CANDY GLAZED HEXAGONAL BRICK)

尺寸：200X230MM (SIZE: 200X230MM)

数量：29片/箱 (QUANTITY: 29 PIECES/CASE)

重量：约21KG/箱 (WEIGHT: ABOUT 21KG/BOX)

M<sup>2</sup>：约29片/平方 (M<sup>2</sup>: ABOUT 29 PIECES/SQUARE)

厚度：约10MM (THICKNESS: ABOUT 10MM)





TGY230-H4

名称：糖果釉六角砖 (NAME: CANDY GLAZED HEXAGONAL BRICK)

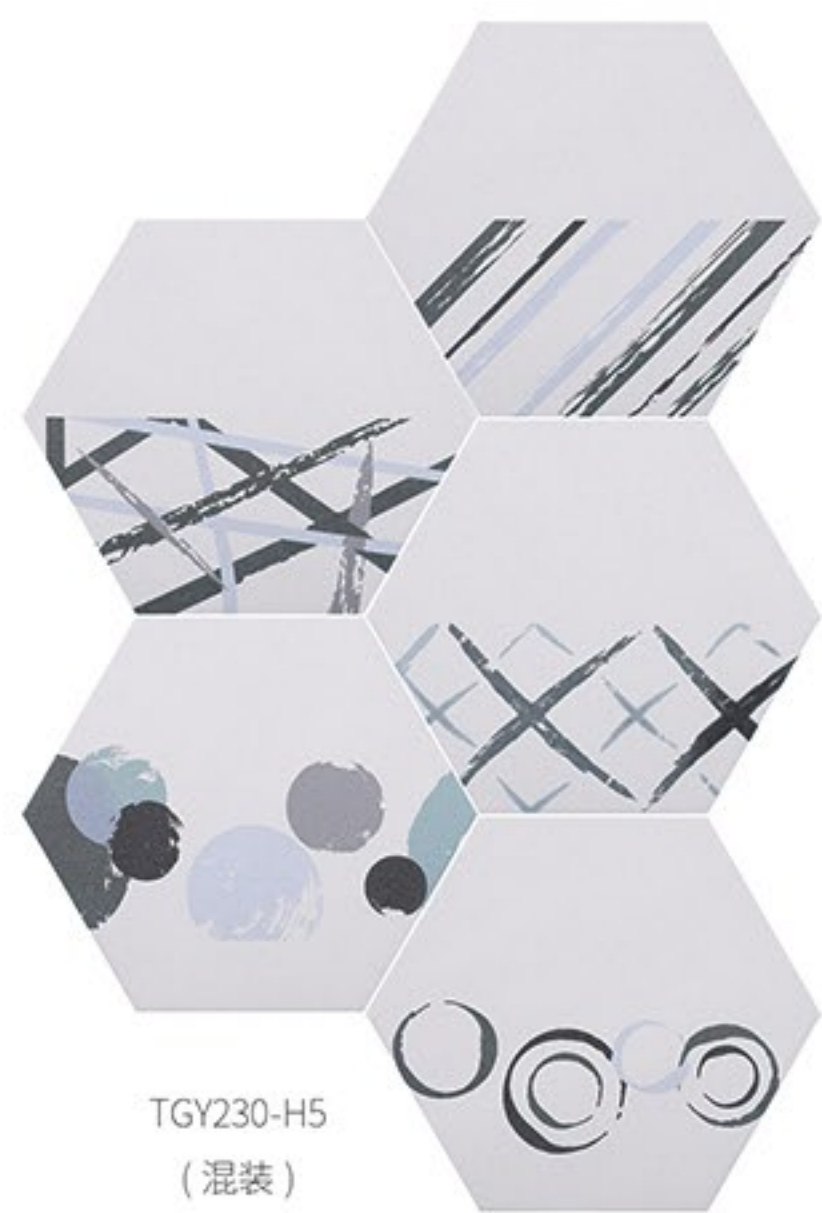
尺寸：200X230MM (SIZE: 200X230MM)

数量：29片 / 箱 (QUANTITY: 29 PIECES/CASE)

重量：约 21KG / 箱 (WEIGHT: ABOUT 21KG/BOX)

M<sup>2</sup>：约 29片 / 平方 (M<sup>2</sup>: ABOUT 29 PIECES/SQUARE)

厚度：约 10MM (THICKNESS: ABOUT 10MM)



名称：糖果釉六角砖 (NAME: CANDY GLAZED HEXAGONAL BRICK)

尺寸：200X230MM (SIZE: 200X230MM)

数量：29片 / 箱 (QUANTITY: 29 PIECES/CASE)

重量：约 21KG / 箱 (WEIGHT: ABOUT 21KG/BOX)

M<sup>2</sup>：约 29片 / 平方 (M<sup>2</sup>: ABOUT 29 PIECES/SQUARE)

厚度：约 10MM (THICKNESS: ABOUT 10MM)





TGY230-H7  
(混装)

名称：糖果釉六角砖 (NAME: CANDY GLAZED HEXAGONAL BRICK)

尺寸：200X230MM (SIZE: 200X230MM)

数量：29片 / 箱 (QUANTITY: 29 PIECES/CASE)

重量：约 21KG / 箱 (WEIGHT: ABOUT 21KG/BOX)

M<sup>2</sup>：约 29片 / 平方 (M<sup>2</sup>: ABOUT 29 PIECES/SQUARE)

厚度：约 10MM (THICKNESS: ABOUT 10MM)





TGYCB005-1



TGYJSB005-1  
(混装)

名称：糖果釉六角砖 (NAME: CANDY GLAZED HEXAGONAL BRICK)

尺寸：200X230MM (SIZE: 200X230MM)

数量：29片 / 箱 (QUANTITY: 29 PIECES/CASE)

重量：约 21KG / 箱 (WEIGHT: ABOUT 21KG/BOX)

M<sup>2</sup>：约 29片 / 平方 (M<sup>2</sup>: ABOUT 29 PIECES/SQUARE)

厚度：约 10MM (THICKNESS: ABOUT 10MM)





## 全瓷孔雀羽系列

All-ceramic Peacock Feather Series



KQYQC90300-FH  
亮光混装

# 全瓷哑光系列

ALL-CERAMIC MATTE SERIES



KQYQC90300-B  
全瓷哑光



KQYQC90300-F  
全瓷哑光



KQYQC90300-M  
全瓷哑光



KQYQC90300-YQH  
全瓷哑光



KQYQC90300-YTL  
全瓷哑光



KQYQC90300-QL  
全瓷哑光



KQYQC90300-SL  
全瓷哑光

名称：全瓷孔雀羽系列 (NAME: ALL-CERAMIC PEACOCK FEATHER SERIES)

尺寸：90X306MM (SIZE: 90X306MM)

数量：42片 / 箱 (QUANTITY: 41 PIECES/CASE)

重量：约 21KG / 箱 (WEIGHT: ABOUT 21 KG/BOX)

M<sup>2</sup>：约 40片 / 平方 (M<sup>2</sup>: ABOUT 40 PIECES/SQUARE)

厚度：约 10MM (THICKNESS: ABOUT 10MM)







## 全瓷亮光系列

ALL-CERAMIC BRIGHT SERIES



KQYQC90300-LB  
全瓷亮光



KQYQC90300-LF  
全瓷亮光



KQYQC90300-LM  
全瓷亮光



KQYQC90300-QLV  
全瓷亮光



KQYQC90300-TL  
全瓷亮光

名称：全瓷孔雀羽系列 (NAME: ALL-CERAMIC PEACOCK FEATHER SERIES)

尺寸：90X306MM (SIZE: 90X306MM)

数量：42片/箱 (QUANTITY: 42 PIECES/CASE)

重量：约21KG/箱 (WEIGHT: ABOUT 21 KG/BOX)

M<sup>2</sup>：约40片/平方 (M<sup>2</sup>: ABOUT 40 PIECES/SQUARE)

厚度：约10MM (THICKNESS: ABOUT 10MM)



## 全瓷亮光系列

ALL-CERAMIC BRIGHT SERIES



KQYQC90300-LVH  
全瓷亮光  
三合一混装



KQYQC90300-FH  
全瓷亮光  
三合一混装

名称：全瓷孔雀羽系列 (NAME: ALL-CERAMIC PEACOCK FEATHER SERIES)

尺寸：90X306MM (SIZE: 90X306MM)

数量：42片/箱 (QUANTITY: 41 PIECES/CASE)

重量：约21KG/箱 (WEIGHT: ABOUT 21 KG/BOX)

M<sup>2</sup>：约40片/平方 (M<sup>2</sup>: ABOUT 40 PIECES/SQUARE)

厚度：约10MM (THICKNESS: ABOUT 10MM)



**全瓷哑光**  
- 翠绿色 -



# 全瓷糖果釉系列

ALL-CERAMIC CONFECTIONERY GLAZE SERIES



KQYTG90300-B  
全瓷糖果釉



KQYTG90300-SC  
全瓷糖果釉



KQYTG90300-QC  
全瓷糖果釉



KQYTG90300-QC  
全瓷糖果釉



KQYTG90300-QLVH  
全瓷糖果釉  
三合一混装

名称：全瓷孔雀羽系列 (NAME: ALL-CERAMIC PEACOCK FEATHER SERIES)

尺寸：90X306MM (SIZE: 90X306MM)

数量：42片 / 箱 (QUANTITY: 41 PIECES/CASE)

重量：约 21KG / 箱 (WEIGHT: ABOUT 21 KG/BOX)

M<sup>2</sup>：约 40片 / 平方 (M<sup>2</sup>: ABOUT 40 PIECES/SQUARE)

厚度：约 10MM (THICKNESS: ABOUT 10MM)





## 全瓷糖果釉系列

ALL-CERAMIC CONFECTIONERY GLAZE SERIES



KQYTG90300-CH  
全瓷糖果釉  
六合一混装

名称：全瓷孔雀羽系列 (NAME: ALL-CERAMIC PEACOCK FEATHER SERIES)

尺寸：90X306MM (SIZE: 90X306MM)

数量：42片 / 箱 (QUANTITY: 42 PIECES/CASE)

重量：约 21KG / 箱 (WEIGHT: ABOUT 21 KG/BOX)

M<sup>2</sup>：约 40片 / 平方 (M<sup>2</sup>: ABOUT 40 PIECES/SQUARE)

厚度：约 10MM (THICKNESS: ABOUT 10MM)

# 全瓷糖果釉系列

ALL-CERAMIC CONFECTIONERY GLAZE SERIES



KQYTG90300-QLH

全瓷糖果釉  
六合一混装

名称：全瓷孔雀羽系列 (NAME: ALL-CERAMIC PEACOCK FEATHER SERIES)

尺寸：90X306MM (SIZE: 90X306MM)

数量：42片 / 箱 (QUANTITY: 42 PIECES/CASE)

重量：约 21KG / 箱 (WEIGHT: ABOUT 21 KG/BOX)

M<sup>2</sup>：约 40片 / 平方 (M<sup>2</sup>: ABOUT 40 PIECES/SQUARE)

厚度：约 10MM (THICKNESS: ABOUT 10MM)





## 全瓷糖果釉系列

ALL-CERAMIC CONFECTIONERY GLAZE SERIES



KQYTG90300-QCH  
全瓷糖果釉/六合一混装



KQYTG90300-QHH  
全瓷糖果釉/四合一混装

名称：全瓷孔雀羽系列 (NAME: ALL-CERAMIC PEACOCK FEATHER SERIES)

尺寸：90X306MM (SIZE: 90X306MM)

数量：42片/箱 (QUANTITY: 42 PIECES/CASE)

重量：约21KG/箱 (WEIGHT: ABOUT 21 KG/BOX)

M<sup>2</sup>：约40片/平方 (M<sup>2</sup>: ABOUT 40 PIECES/SQUARE)

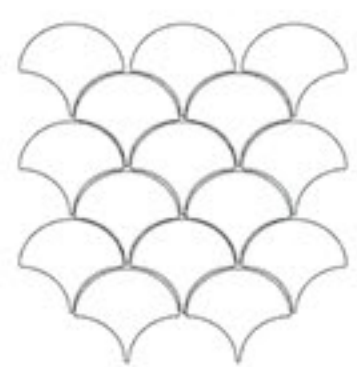
厚度：约10MM (THICKNESS: ABOUT 10MM)



**全瓷糖果釉**  
- 阳光橙系列 -







# 龙鳞

SQUAMA



SGZX002-1



SGZX001H-1

名称：冰裂龙鳞马赛克 (NAME: ICE CRACKED DRAGON SCALE MOSAIC)

尺寸：300X310MM (SIZE: 300X310MM)

数量：9 贴 / 箱 (QUANTITY: 9 PASTE / BOX)

重量：约 12.5KG / 箱 (WEIGHT: ABOUT 12.5 KG/BOX)

M<sup>2</sup>：约 14.8 片 / 平方 (M<sup>2</sup>: ABOUT 14.8 PIECES/SQUARE)

厚度：约 10MM (THICKNESS: ABOUT 10MM)





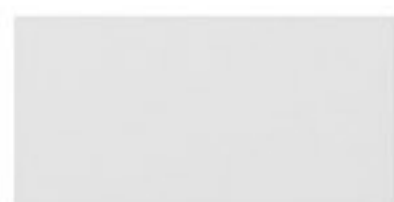
西班牙进口原料





●  
香格里拉

Shangri-La



PMHZ005-B



MJMHZ006-B (四合一混装)



PMHZ007-F (三合一混装)



MJMHZ008-F (四合一混装)

名称：香格里拉 (NAME: SHANGRI-LA SERIES)

尺寸：100X200MM (SIZE: 100X200MM)

数量：48-54片 / 箱 (QUANTITY: 48-54 PIECES/CASE)

重量：约 13.6-15.8KG / 箱 (WEIGHT: ABOUT 13.6-15.8 KG/BOX)

M<sup>2</sup>：约 50片 / 平方 (M<sup>2</sup>: ABOUT 50 PIECES/SQUARE)

厚度：约 11.2MM (THICKNESS: ABOUT 11.2MM)





PMHZ001-C (三合一混装)



MHMHZ002-C (四合一混装)

名称：香格里拉系列 (NAME: SHANGRI-LA SERIES)

尺寸：100X200MM (SIZE: 100X200MM)

数量：48-54片 / 箱 (QUANTITY: 48-54 PIECES/CASE)

重量：约 13.6-15.8KG / 箱 (WEIGHT: ABOUT 13.6-15.8 KG/BOX)

M<sup>2</sup>：约 50片 / 平方 (M<sup>2</sup>: ABOUT 50 PIECES/SQUARE)

厚度：约 11.2MM (THICKNESS: ABOUT 11.2MM)



HZ003

名称：搭配花砖 (NAME: COLLOCATION TILE)

尺寸：200X200MM (SIZE: 200X200MM)

数量：25片 / 箱 (QUANTITY: 25 PIECES/CASE)

重量：约 22KG / 箱 (WEIGHT: ABOUT 22 KG/BOX)

M<sup>2</sup>：约 25片 / 平方 (M<sup>2</sup>: ABOUT 25 PIECES/SQUARE)

厚度：约 10MM (THICKNESS: ABOUT 10MM)





PMHZ003-H (三合一混装)



MJMHZ004-H (四合一混装)

名称：香格里拉系列 (NAME: SHANGRI-LA SERIES)

尺寸：100X200MM (SIZE: 100X200MM)

数量：48-54 片 / 箱 (QUANTITY: 48-54 PIECES/CASE)

重量：约 13.6-15.8KG / 箱 (WEIGHT: ABOUT 13.6-15.8 KG/BOX)

M<sup>2</sup>：约 50 片 / 平方 (M<sup>2</sup>: ABOUT 50 PIECES/SQUARE)

厚度：约 11.2MM (THICKNESS: ABOUT 11.2MM)



HZ001

名称：搭配花砖 (NAME: COLLOCATION TILE)

尺寸：200X200MM (SIZE: 200X200MM)

数量：25 片 / 箱 (QUANTITY: 25 PIECES/CASE)

重量：约 22KG / 箱 (WEIGHT: ABOUT 22 KG/BOX)

M<sup>2</sup>：约 25 片 / 平方 (M<sup>2</sup>: ABOUT 25 PIECES/SQUARE)

厚度：约 10MM (THICKNESS: ABOUT 10MM)





PMHZ009-L (三合一混装)



MJMHZ010-L (四合一混装)

名称：香格里拉系列 (NAME:SHANGRI-LA SERIES)

尺寸：100X200MM (SIZE: 100X200MM)

数量：48-54 片 / 箱 (QUANTITY: 48-54 PIECES/CASE)

重量：约 13.6-15.8KG / 箱 (WEIGHT: ABOUT 13.6-15.8 KG/BOX)

M<sup>2</sup>：约 50 片 / 平方 (M<sup>2</sup>: ABOUT 50 PIECES/SQUARE)

厚度：约 11.2MM (THICKNESS: ABOUT 11.2MM)



HZ002

名称：搭配花砖 (NAME: COLLOCATION TILE)

尺寸：200X200MM (SIZE: 200X200MM)

数量：25 片 / 箱 (QUANTITY: 25 PIECES/CASE)

重量：约 22KG / 箱 (WEIGHT: ABOUT 22 KG/BOX)

M<sup>2</sup>：约 25 片 / 平方 (M<sup>2</sup>: ABOUT 25 PIECES/SQUARE)

厚度：约 10MM (THICKNESS: ABOUT 10MM)





# 窑变系列

Kiln series







YB004



YB006



YB003



YB005



YB002



YB008



YB001



YB007

名称：窑变手工砖 (NAME: KILN-TO-HAND BRICKS)

尺寸：64X226MM (SIZE: 64X226MM)

数量：40片 / 箱 (QUANTITY: 40 PIECES/CASE)

重量：约 16KG / 箱 (WEIGHT: ABOUT 16KG/BOX)

M<sup>2</sup>：约 69片 / 平方 (M<sup>2</sup>: ABOUT 69 PIECES/SQUARE)

厚度：约 15MM (THICKNESS: ABOUT 15MM)





细节





釉系列  
Glaze series



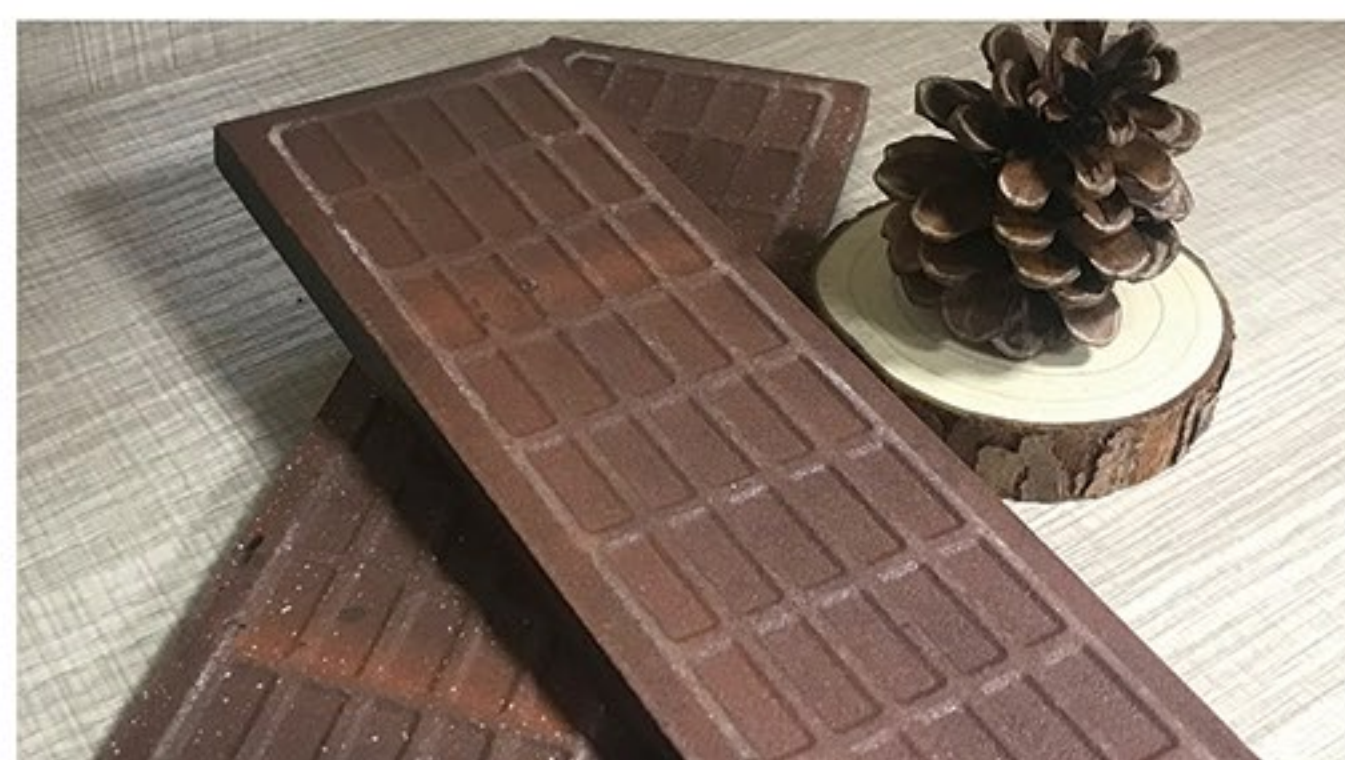
HPY60200-1



HPY60200-2



HPY60200-3



名称：长条红坯砖 (NAME: LONG RED BRICK)

尺寸：62X208MM (SIZE: 62X208MM)

数量：64片 / 箱 (QUANTITY: 64 PIECES/CASE)

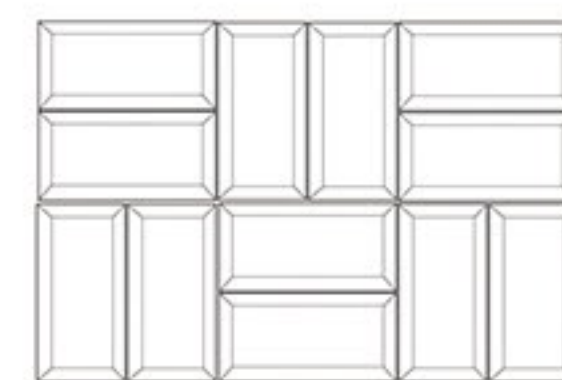
重量：约 17.5KG / 箱 (WEIGHT: ABOUT 17.5 KG/BOX)

M<sup>2</sup>：约 83片 / 平方 (M<sup>2</sup>: ABOUT 83 PIECES/SQUARE)

厚度：约 10MM (THICKNESS: ABOUT 10MM)







面包砖系列  
Bread Brick Series



BED75150-11



BED75150-12



BED75150-13



BED75150-15



名称：面包砖系列 (NAME: BREAD BRICK SERIES)

尺寸：75X150MM (SIZE: 75X150MM)

数量：46片 / 箱 (QUANTITY: 46 PIECES/CASE)

重量：约 11KG / 箱 (WEIGHT: ABOUT 11 KG/BOX)

M<sup>2</sup>：约 88片 / 平方 (M<sup>2</sup>: ABOUT 88 PIECES/SQUARE)

厚度：约 18.5MM (THICKNESS: ABOUT 18.5MM)





Bright reflection

更好的发射面，大幅提升房间的明亮度。







美蓬砖系列  
Meipeng Brick Series



X-F150-HS (四合一混装)



X-F150-F



X-F150-B



X-F150-L



X-F150-H



名称：美篷砖系列 (NAME: BREAD BRICK SERIES)

尺寸：150X150MM (SIZE: 150X150MM)

数量：30片 / 箱 (QUANTITY: 30 PIECES/CASE)

重量：约 14.5KG / 箱 (WEIGHT: ABOUT 14.5 KG/BOX)

M<sup>2</sup>：约 44片 / 平方 (M<sup>2</sup>: ABOUT 44 PIECES/SQUARE)

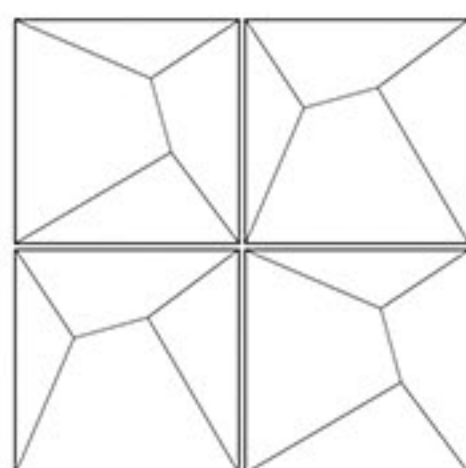
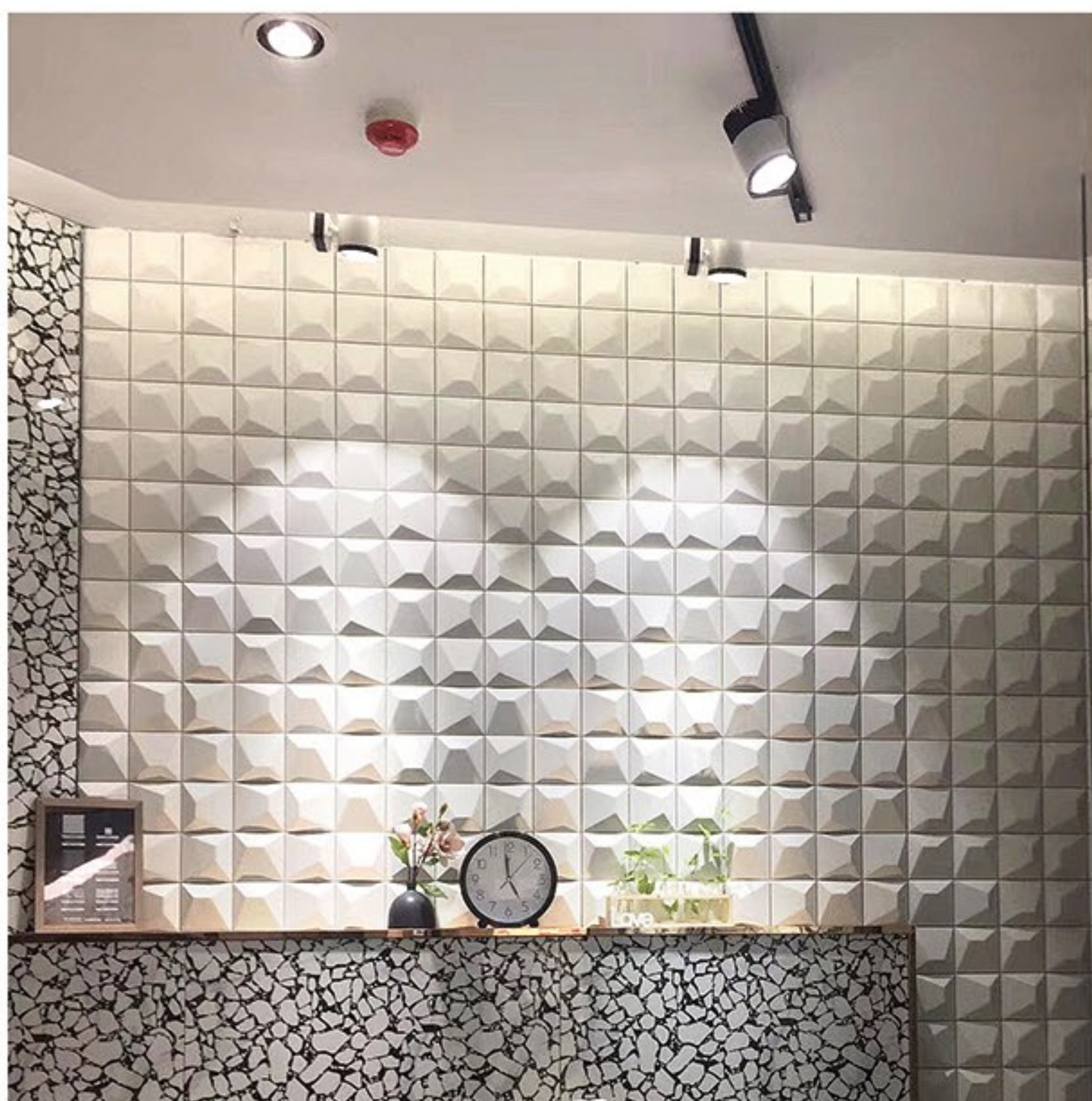
厚度：约 24.5MM (THICKNESS: ABOUT 24.5MM)





X-F150-LH  
(三合一混装)





X-F150-B3

名称：美篷砖系列 (NAME: BREAD BRICK SERIES)

尺寸：150X150MM (SIZE: 150X150MM)

数量：30片 / 箱 (QUANTITY: 30 PIECES/CASE)

重量：约 14.5KG / 箱 (WEIGHT: ABOUT 14.5 KG/BOX)

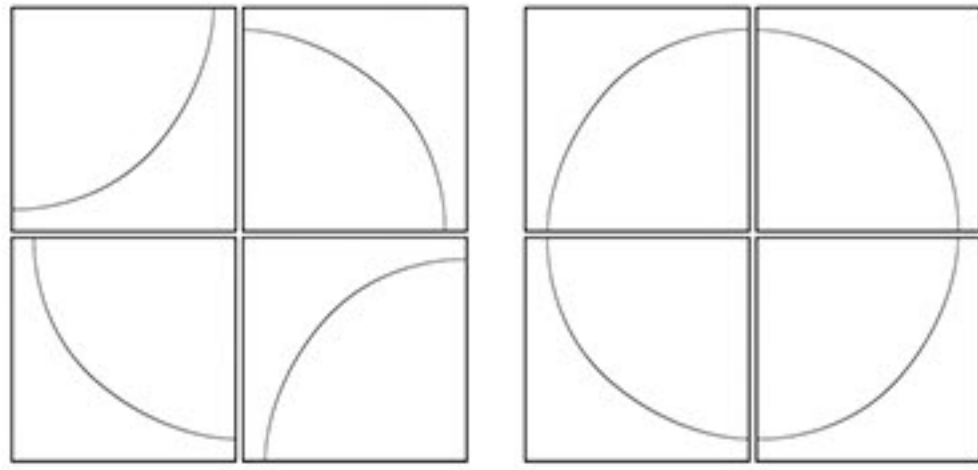
M<sup>2</sup>：约 44片 / 平方 (M<sup>2</sup>: ABOUT 44 PIECES/SQUARE)

厚度：约 24.5MM (THICKNESS: ABOUT 24.5MM)





X-F150-B2





阿尔山  
Arxan



AES15-1



AES15-2



AES15-3



AES15-4

名称：阿尔山系列 (NAME: ARXAN SERIES)

尺寸：150X800MM (SIZE: 150X800MM)

数量：9片/箱 (QUANTITY: 9 PIECES/CASE)

重量：约21KG/箱 (WEIGHT: ABOUT 21 KG/BOX)

M<sup>2</sup>：约8.3片/平方 (M<sup>2</sup>: ABOUT 8.3 PIECES/SQUARE)

厚度：约10MM (THICKNESS: ABOUT 10MM)





AES30-1 (一砖多面)



AES30-2 (一砖多面)



AES30-3 (一砖多面)



AES30-4 (一砖多面)

名称：阿尔山系列 (NAME: ARXAN SERIES)

尺寸：300X800MM (SIZE: 150X800MM)

数量：6片 / 箱 (QUANTITY: 6 PIECES/CASE)

重量：约 28KG / 箱 (WEIGHT: ABOUT 28 KG/BOX)

M<sup>2</sup>：约 5.55片 / 平方 (M<sup>2</sup>: ABOUT 5.55 PIECES/SQUARE)

厚度：约 10MM (THICKNESS: ABOUT 10MM)







水磨石系列  
Terrazzo Series



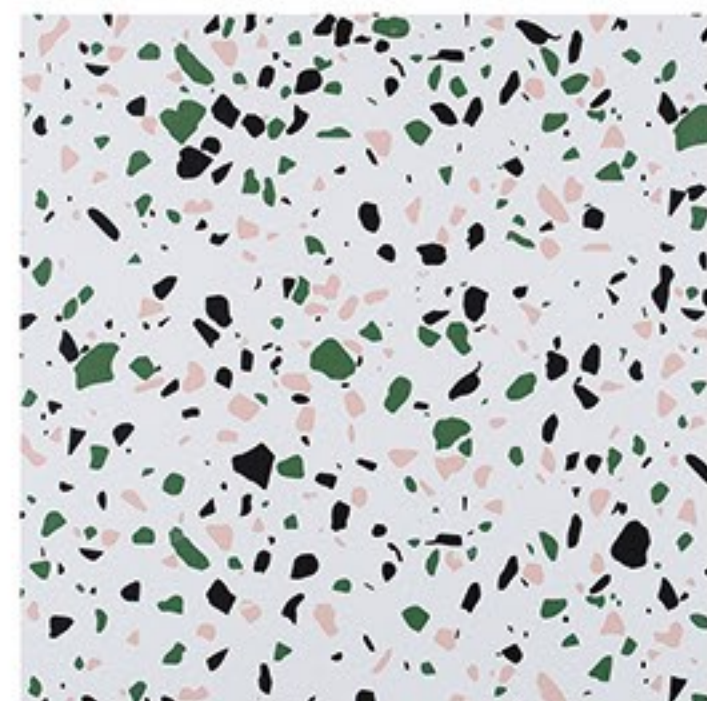
CYSMS6001



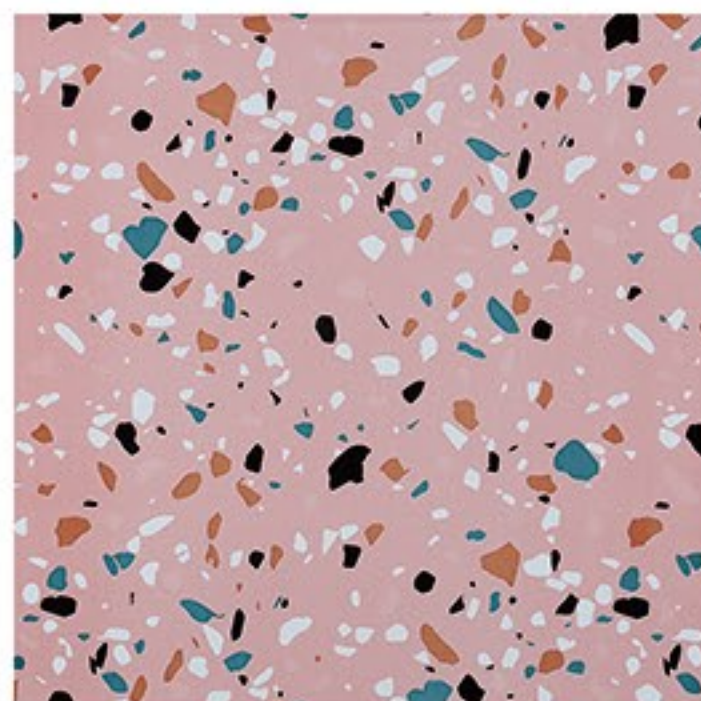
CYSMS6002



CYSMS6003



CYSMS6004



CYSMS6005

名称：水磨石系列 (NAME: TERRAZZO SERIES)

尺寸：600X600MM (SIZE: 600X600MM)

数量：4片 / 箱 (QUANTITY: 4 PIECES/CASE)

重量：约 30KG / 箱 (WEIGHT: ABOUT 30 KG/BOX)

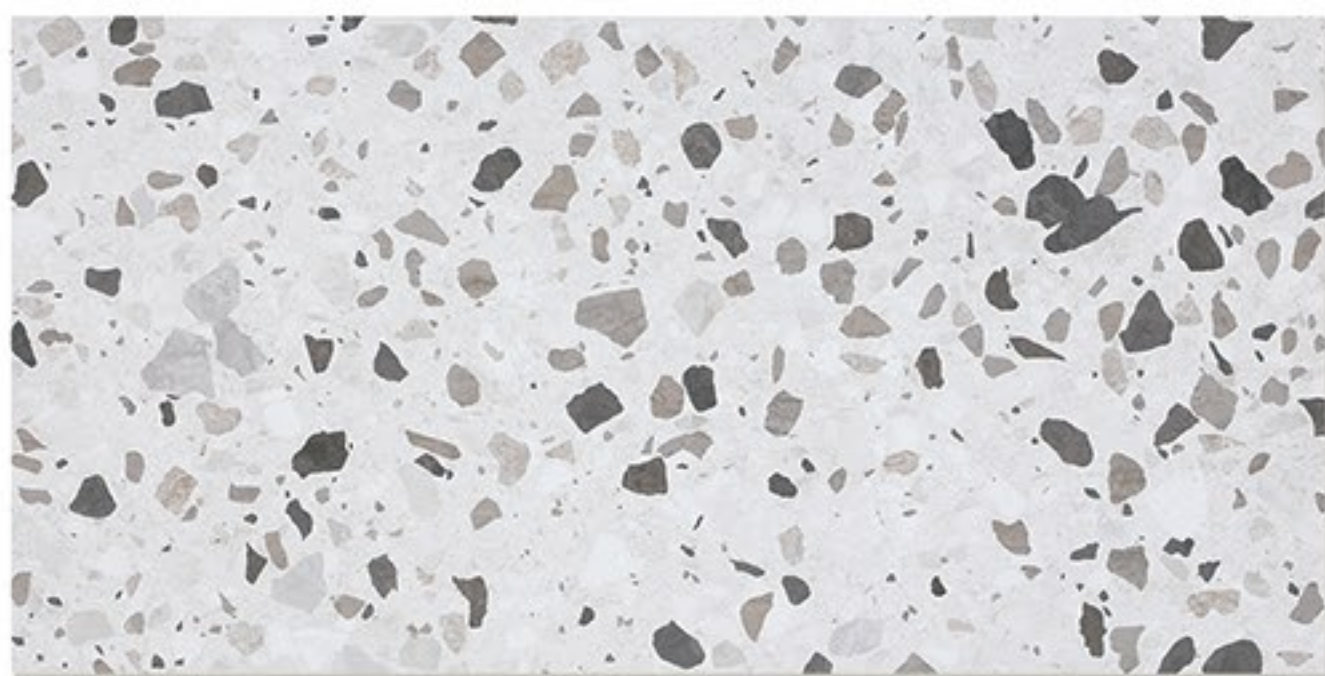
M<sup>2</sup>：约 3片 / 平方 (M<sup>2</sup>: ABOUT 3 PIECES/SQUARE)

厚度：约 10MM (THICKNESS: ABOUT 10MM)









STF62014M(一砖多面)



STF62015M(一砖多面)



STF62017M(一砖多面)

名称：水磨石系列 (NAME: TERRAZZO SERIES)

尺寸：600X1200MM (SIZE: 600X1200MM)

数量：2片 / 箱 (QUANTITY: 2 PIECES/CASE)

重量：约 32KG / 箱 (WEIGHT: ABOUT 32 KG/BOX)

M<sup>2</sup>：约 1.5片 / 平方 (M<sup>2</sup>: ABOUT 1.5 PIECES/SQUARE)

厚度：约 11.2MM (THICKNESS: ABOUT 11.2MM)



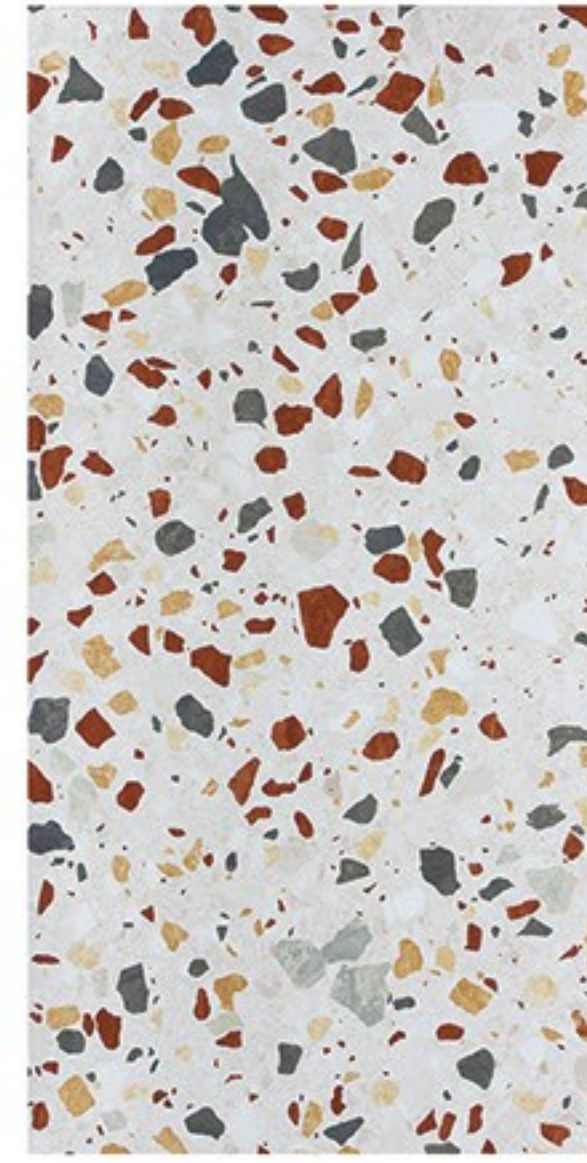


STF62015M - 哑光





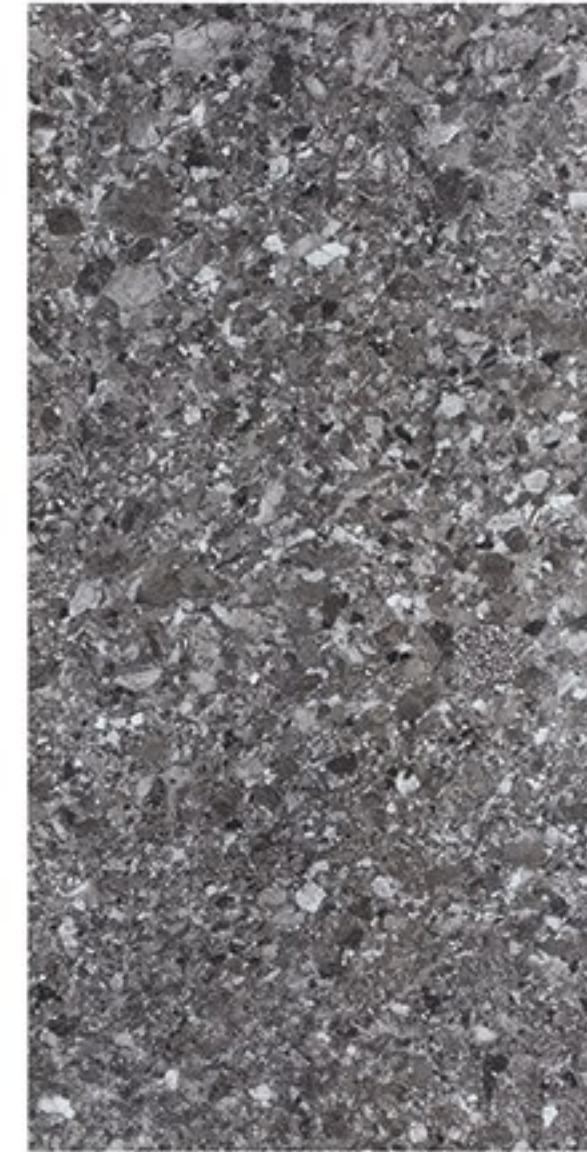
（ 水磨石**亮光**系列 ）  
Terrazzo Bright Series



STF62021  
(一砖多面)  
亮光



STF62018  
(一砖多面)  
亮光



STF62019  
(一砖多面)  
亮光



STF62020  
(一砖多面)  
亮光

名称：水磨石系列 (NAME: TERRAZZO SERIES)

尺寸：600X1200MM (SIZE: 600X1200MM)

数量：2片 / 箱 (QUANTITY: 2 PIECES/CASE)

重量：约 32KG / 箱 (WEIGHT: ABOUT 32 KG/BOX)

M<sup>2</sup>：约 1.5片 / 平方 (M<sup>2</sup>: ABOUT 1.5 PIECES/SQUARE)

厚度：约 11.2MM (THICKNESS: ABOUT 11.2MM)



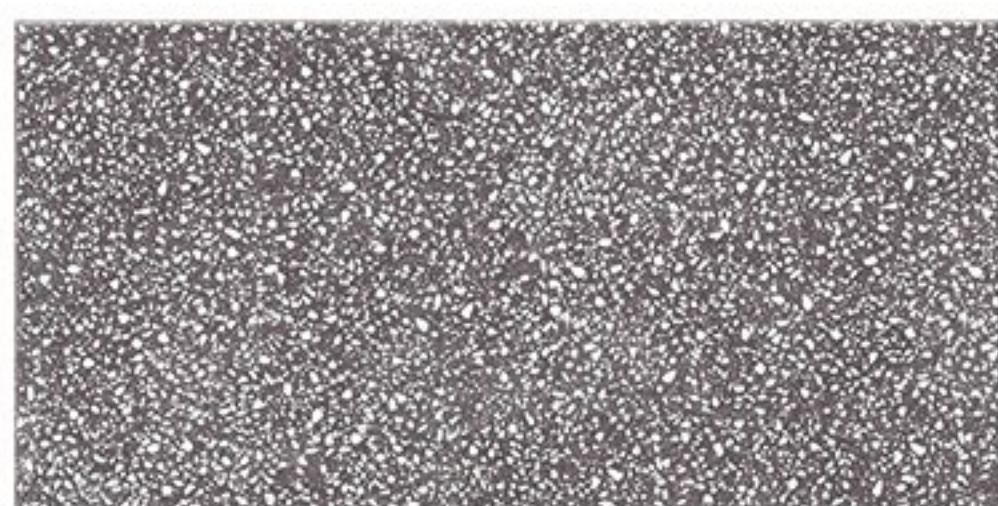




JS601201D



JS601202D



JS601203D



JS601204D

名称：水磨石系列 (NAME: TERRAZZO SERIES)

尺寸：600X1200MM (SIZE: 600X1200MM)

数量：2片 / 箱 (QUANTITY: 2 PIECES/CASE)

重量：约 32KG / 箱 (WEIGHT: ABOUT 32 KG/BOX)

M<sup>2</sup>：约 1.5片 / 平方 (M<sup>2</sup>: ABOUT 1.5 PIECES/SQUARE)

厚度：约 11.2MM (THICKNESS: ABOUT 11.2MM)



江西唯梵陶瓷有限公司

JIANGXI WIFI CERAMICS CO.,LTD.

NO.13-17, Building A16#, International Ceramics and Sanitary Ware City,  
Jihua West Rd.Nanzhuang Town, Foshan City, Guangdong Province, China.

[WWW.WIFICERAMICS.COM](http://WWW.WIFICERAMICS.COM)