

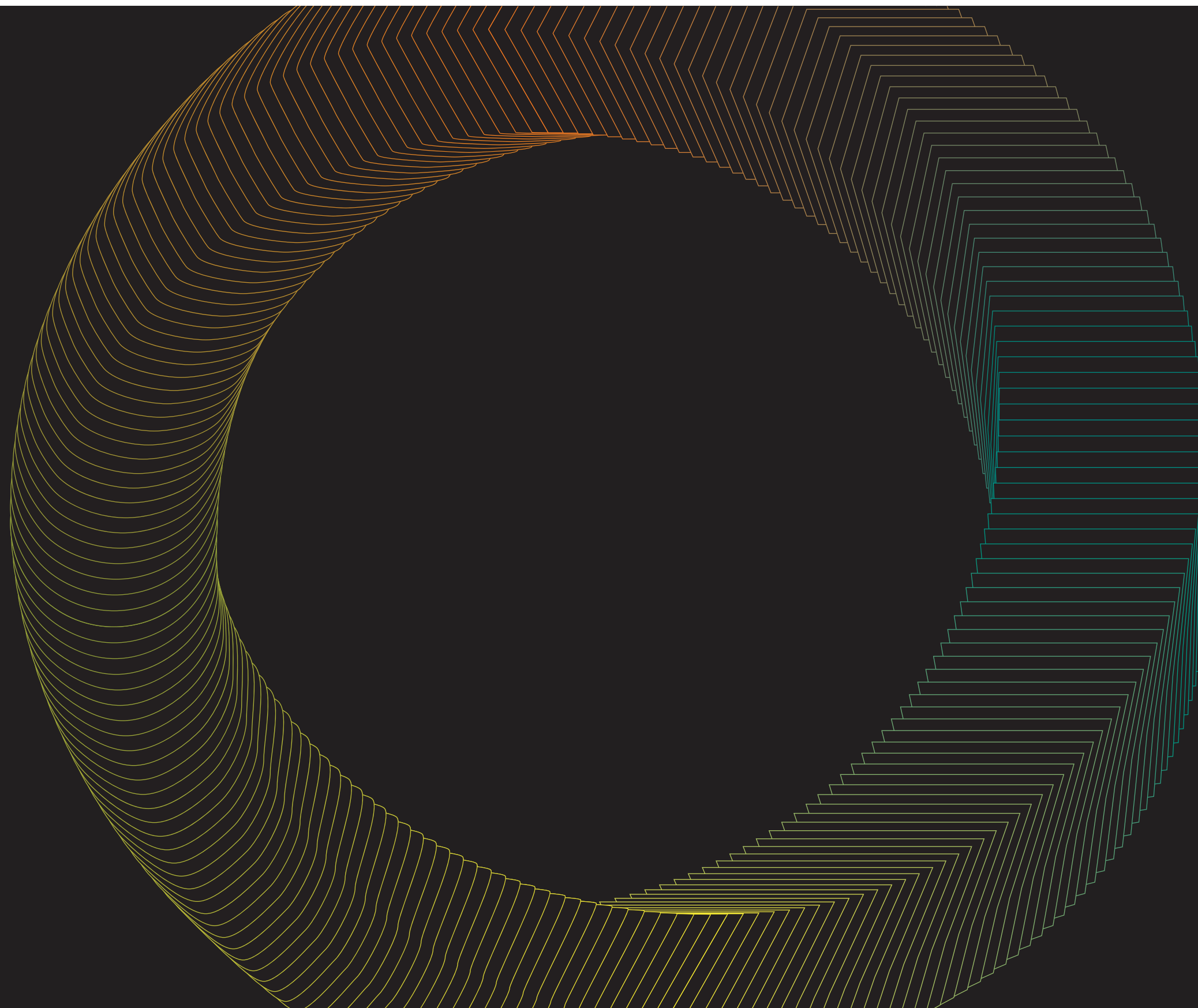


TRIO
COMPILATION
三重奏系列 01

TRIO

COMPILATION
三重奏系列

BOSCO Collections
Violin series
Viola series
Cello series





BOSCO

collections

VIOLIN **ASH**

■ 91501
15 X 90
Matt Surface

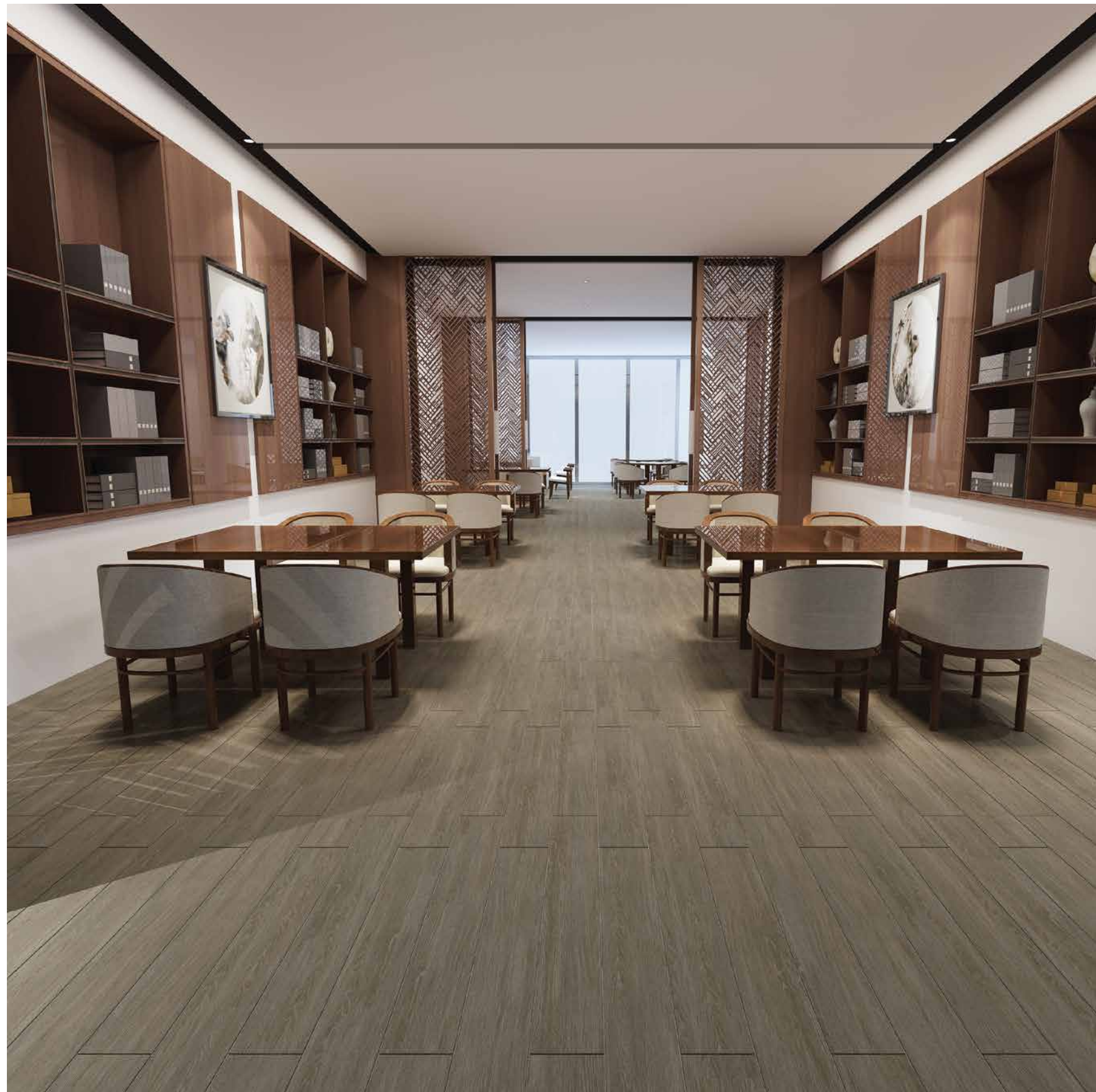


BOSCO

collections

VIOLIN **ASH**

■ 915805
15 X 90
Matt Surface



BOSCO

collections

VIOLIN **TAUPE**

■ PW9303
15 X 90
Matt Surface



BOSCO

collections

VIOLIN **IVORY**

■ PW9305
15 X 90
Matt Surface



BOSCO

collections

VIOLIN **SANDAL**

■ PW9309
15 X 90
Matt Surface



BOSCO

collections

VIOLIN **MARONE**

■ PW9312
15 X 90
Matt Surface

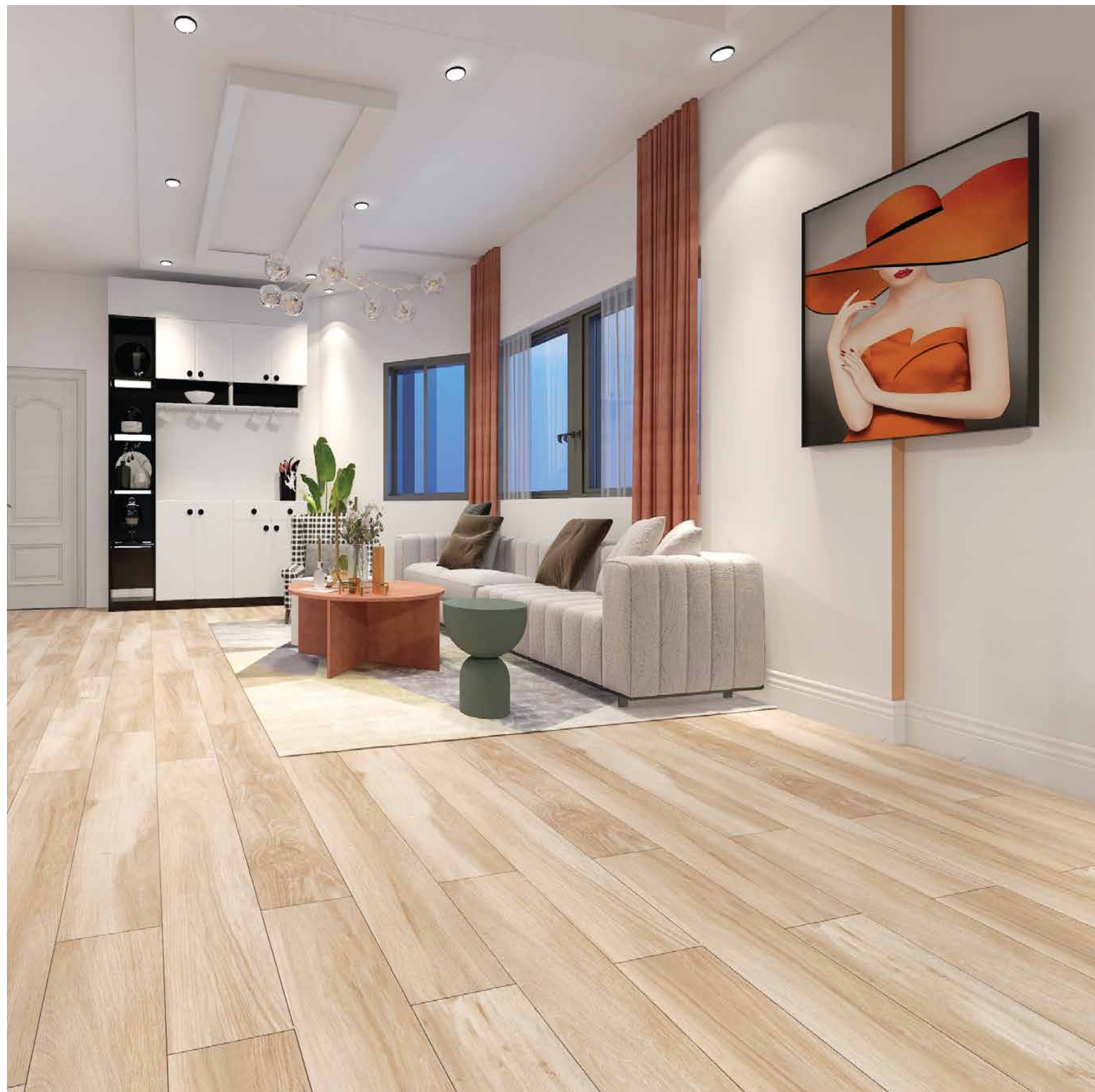


BOSCO

collections

VIOLA **ICE**

■ PW20301
20 X 120
Matt Surface

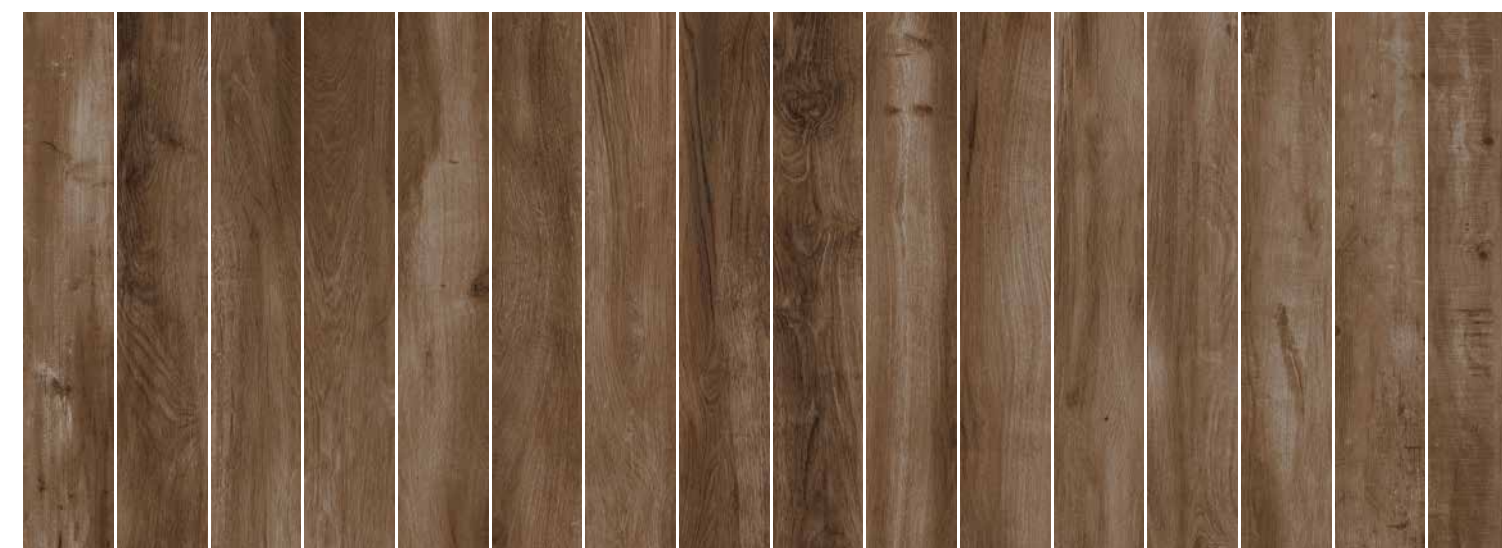


BOSCO

collections

VIOLA **TANGERIN**

■ PW20302
20 X 120
Matt Surface



BOSCO

collections

VIOLA **COCOA**

■ PW20303
20 X 120
Matt Surface



BOSCO

collections

VIOLA **BEIGE**

■ PW20307
20 X 120
Matt Surface



BOSCO

collections

VIOLA **BROWN**

■ PW20310
20 X 120
Matt Surface



BOSCO

collections

CELLO **TAUPE**

■ PW20306
20 X 120
Matt Surface



BOSCO

collections

CELLO **IVORY**

■ PW20308
20 X 120
Matt Surface



BOSCO

collections

CELLO **BEIGE**

■ PW20309
20 X 120
Matt Surface



BOSCO

collections

CELLO **CHOCO**

■ PW20311
20 X 120
Matt Surface



BOSCO

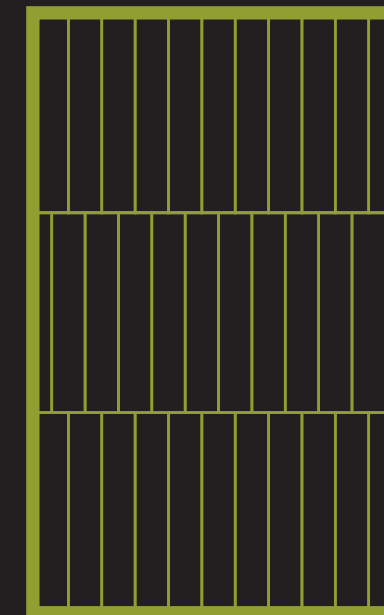
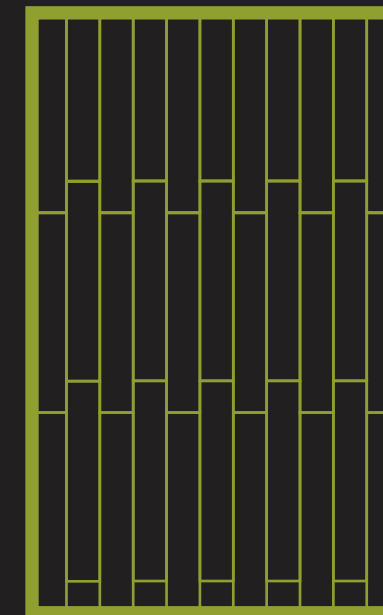
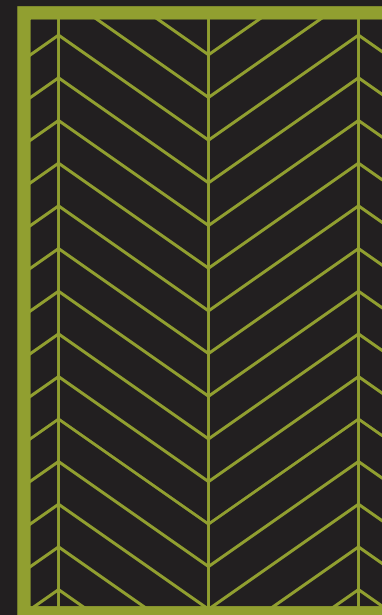
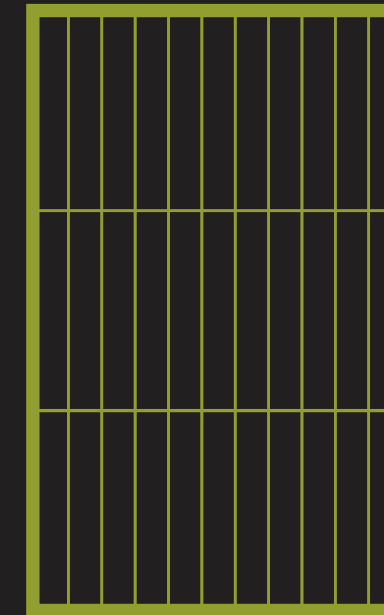
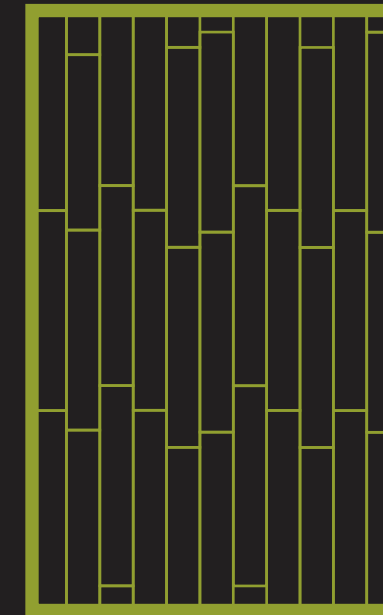
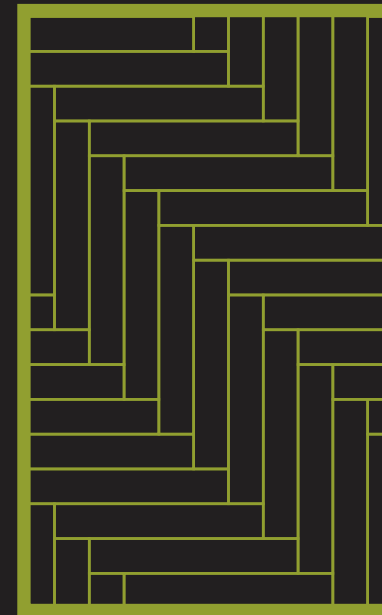
collections

CELLO **GREIGE**

■ PW20313
20 X 120
Matt Surface

INSTALLATION TIPS

- 01 Inspect all product prior to installation for any visible defects or unacceptable colour/ shade variation. Claims are not accepted after installation.
- 02 Lay the tiles according to the direction indicated on the bottom of the billet.
- 03 Soak the tiles before laying.
- 04 A 1/4" square-notched trowel is suggested for applying the thin set.
- 05 Before grouting, allow the mortar base to dry for 24-48 hours
- 06 The tiles can be cleaned with clear water and /or a neutral liquid cleaner. Apply the cleaning solution to the properly installed tile using a cloth mop or non-abrasive towel. Follow the application with a clear water rinse and wipe dry to prevent film formation.
- 07 Sealing the tile is not recommended, and acid cleaning the tile may result in substantial harm to the product; therefore if either of these applications are performed it will specifically void the warranty.
- 08 **INSTALLATION OF RECTANGULAR TILES:**
Staggered space should be kept within 10cm-15cm (For 10cm x 60cm, 15cmx60cm,20cmx 60cm,30cmx60cm,and 47cmx120cm rectangular tiles) to compensate for the warpage of rectangular tiles. It is important to keep 2-3mm gap.



TECHNICAL SPECIFICATIONS

DESCRIPTION	STANDARD TEST	MEASUREMENT UNIT	ISO STANDARD REQUIREMENT	WIFI
Length & Width	ISO 10545 - 2	mm	± 0,5% Max	± 0,5% Max
Thickness	ISO 10545 - 2	mm	± 5,0% Max	± 5,0% Max
Sides Straightness	ISO 10545 - 2	mm	± 0,5% Max	± 0,5% Max
Rectangularity	ISO 10545 - 2	mm	± 0,6% Max	± 0,6% Max
Flatness: a) Centre Curvature b) Edge Curvature c) Warpage	ISO 10545 - 2 ISO 10545 - 2 ISO 10545 - 2	mm mm mm	± 0,5% Max ± 0,5% Max ± 0,5% Max	± 0,5% Max ± 0,5% Max ± 0,5% Max
Surface Quality	ISO 10545 - 2	One major area of tiles	≥ 95% free from visible defect	≥ 95% free from visible defect
Water Absorption	ISO 10545 - 3	Mass	≤ 0,5%	0,05%
Modulus of Rupture	ISO 10545 - 4	N/mm ²	≥ 35N/mm ²	≥ 35N/mm ²
Deep Abrasion	ISO 10545 - 6	mm ³	≤ 175 mm ³	≤ 175 mm ³
Surface Abrasion PEI ASTM C1027	ISO 10545 - 7	Visual Check	Manuf. to state Abrasion Class, Cycle Passed	Manuf. to state Abrasion Class, Cycle Passed
Crazing Test	ISO 10545 - 11	Visual Check	Not Applicable for porcelain tiles	Not Applicable for porcelain tiles
Frost Resistance	ISO 10545 - 12	Visual Check	Required	Required
Chemical Resistance (Low Cons.)	ISO 10545 - 13	Visual Check	Manuf. to state	Manuf. to state
Chemical Resistance (Household/Swimming Pool)	ISO 10545 - 13	Visual Check	Max Visible Change On Cut Side	Max Visible Change On Cut Side
Stain Resistance	ISO 10545 - 14	Visual Check	Class 3 Min	Class 3 Min
Coefficient of Friction	ISO 10545 - 17	Manuf. to state	Manuf. to state	Manuf. to state

Each different tiles series is produced to meet different performance requirements. For specific product technical performance, please request from **WIFI** sales team or their agent or distributor.

Colour Variations: Since the colour reproduction in this printed piece will vary from the actual tile colours, final selection should be made from tile samples. Colour, shade and glaze variations may exist due to the inherent characteristics of porcelain tile.

WIFI CERAMICS

No. 13-17, Building A16,
International Ceramics and Sanitary Ware City,
Jihua West Road, Nanzhuang Town,
Chancheng District, Foshan City
Guangdong Province, China.

+86-757-8252 5001
info@wificeramics.com
www.wificeramics.com