



NATURALIS  
MARBLE



OPUS  
CEMENT



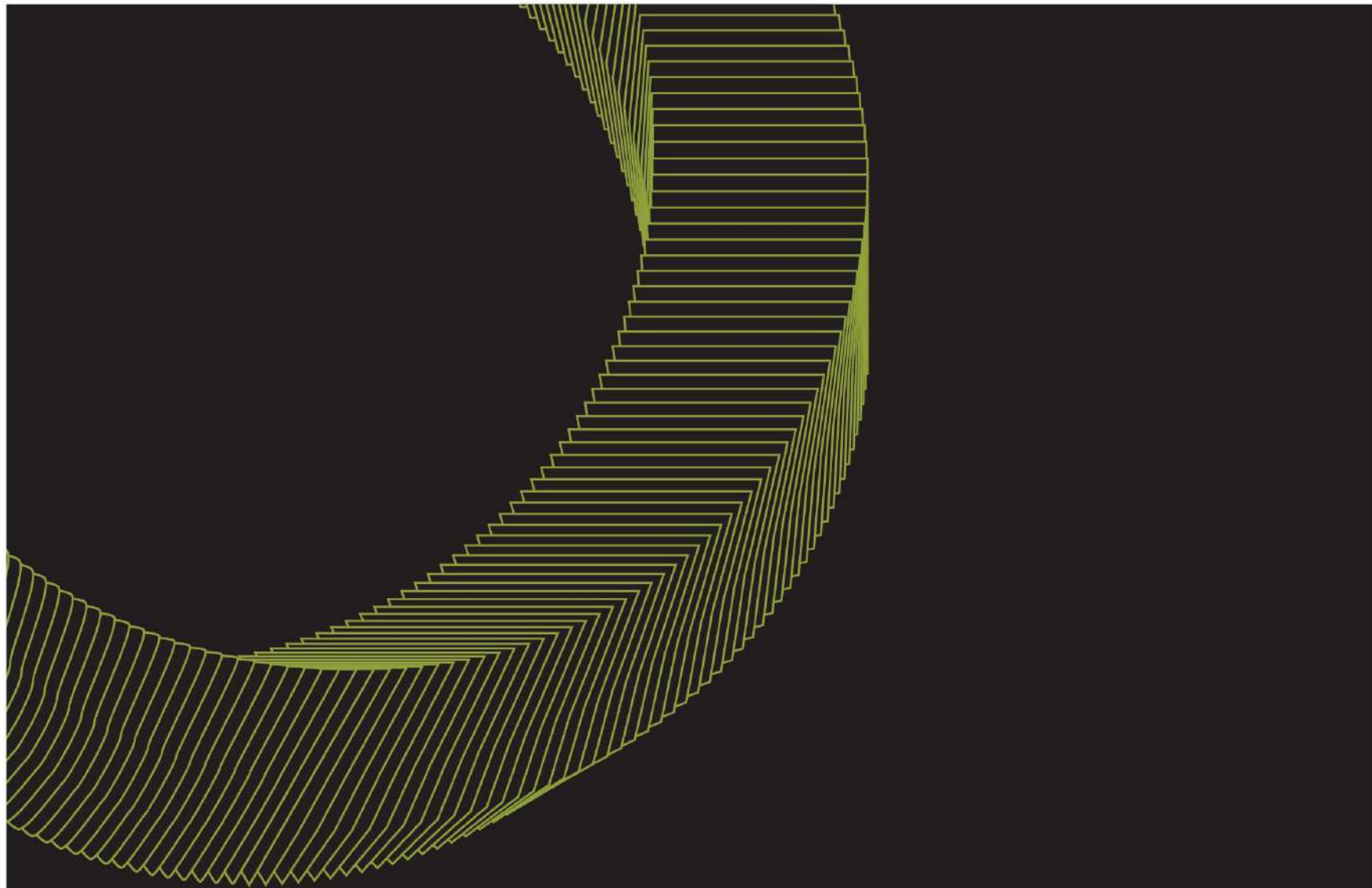
NATURALIS  
STONE



OPUS  
TERRAZZO



BOSCO  
WOOD



## OPUS COLLECTIONS

By definition, an Opus is a created work by man, usually of an artistic kind. It is creative and beautiful - a definite work of art to the eye of the beholder.

OPUS, a unique glazed porcelain tile collection that offers designs inspired by man-made materials in the architecture world. Opus tiles provides infinite possibilities to the discerning when it comes to beautiful, modern spaces. Its range of versatile, neutral hues also aims to delight the senses.

## OPUS COLLECTIONS

# TERRAX 特拉克斯水磨石

Opus introduces Terrax, a fabulous porcelain tile that combines the beauty of actual terrazzo with the convenience of tile. Available in two sizes and three gorgeous colours, terrazzo tiles are extremely versatile when it comes to spatial styling. Its industrial look injects textural quality to contemporary homes while its retro vibe makes it a perfect fit for mid-century modern settings.

### IVORY ■ NATURAL



**TRX71500**  
■ 75x150  
■ 4 faces

**TRX61200**  
■ 60x120  
■ 4 faces

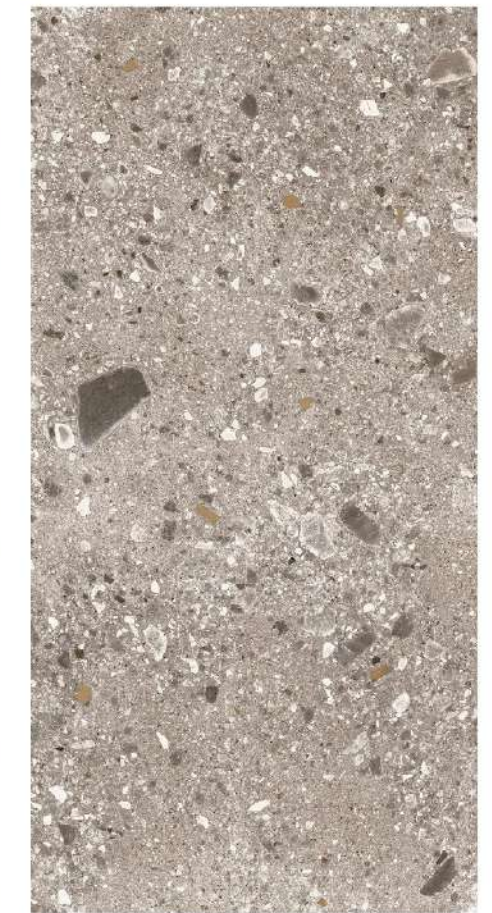
### CINDER ■ NATURAL



**TRX71503**  
■ 75x150  
■ 4 faces

**TRX61203**  
■ 60x120  
■ 4 faces

### BROWN ■ NATURAL



**TRX71504**  
■ 75x150  
■ 4 faces

**TRX61204**  
■ 60x120  
■ 4 faces



WIFI  
CERAMICHE  
唯梵



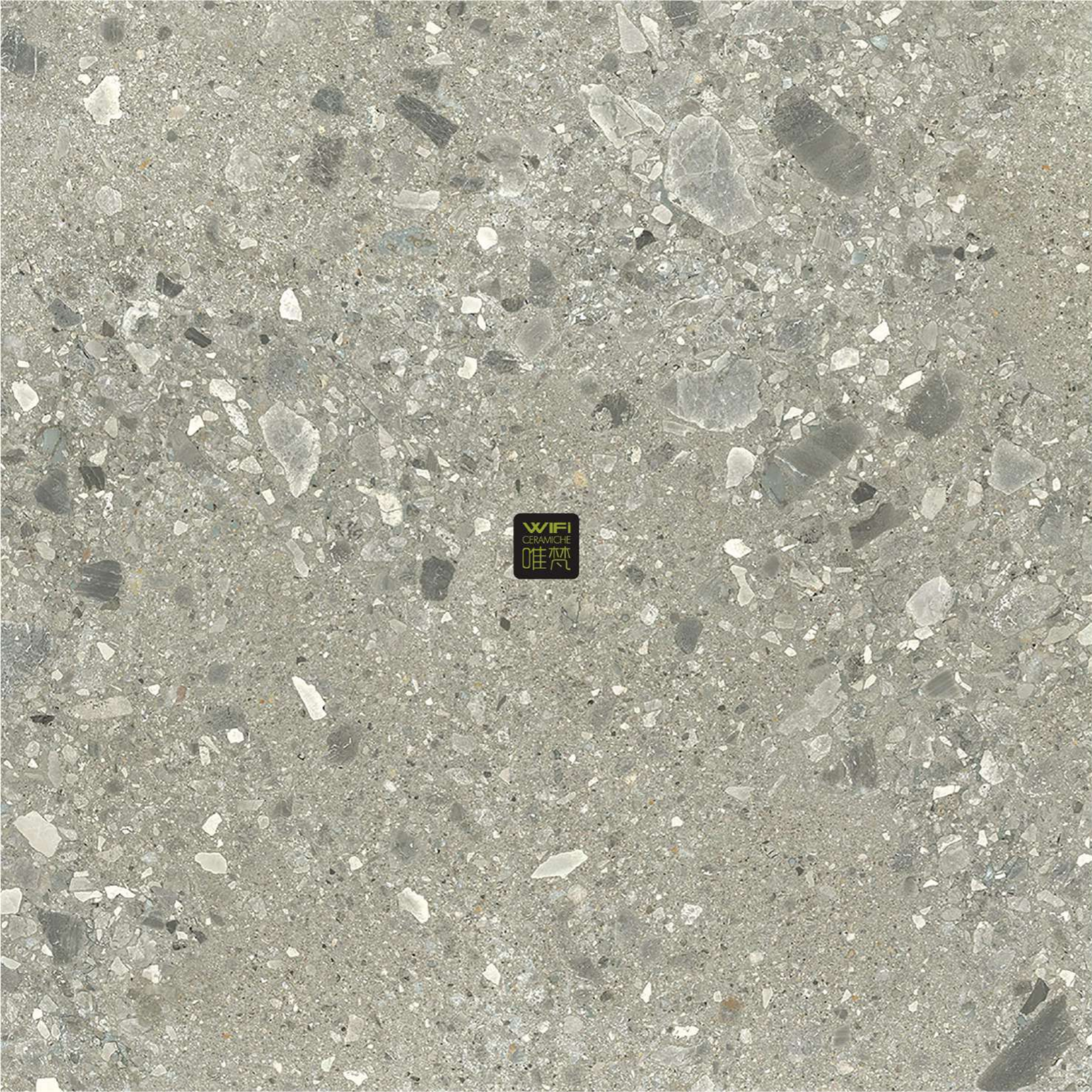
**IVORY** TRX61200  
■ LIVING ROOM APPLICATION



**IVORY** TRX61200  
■ BEDROOM APPLICATION



**IVORY** TRX61200  
■ KITCHEN APPLICATION



WIFI  
CERAMICHE  
唯梵



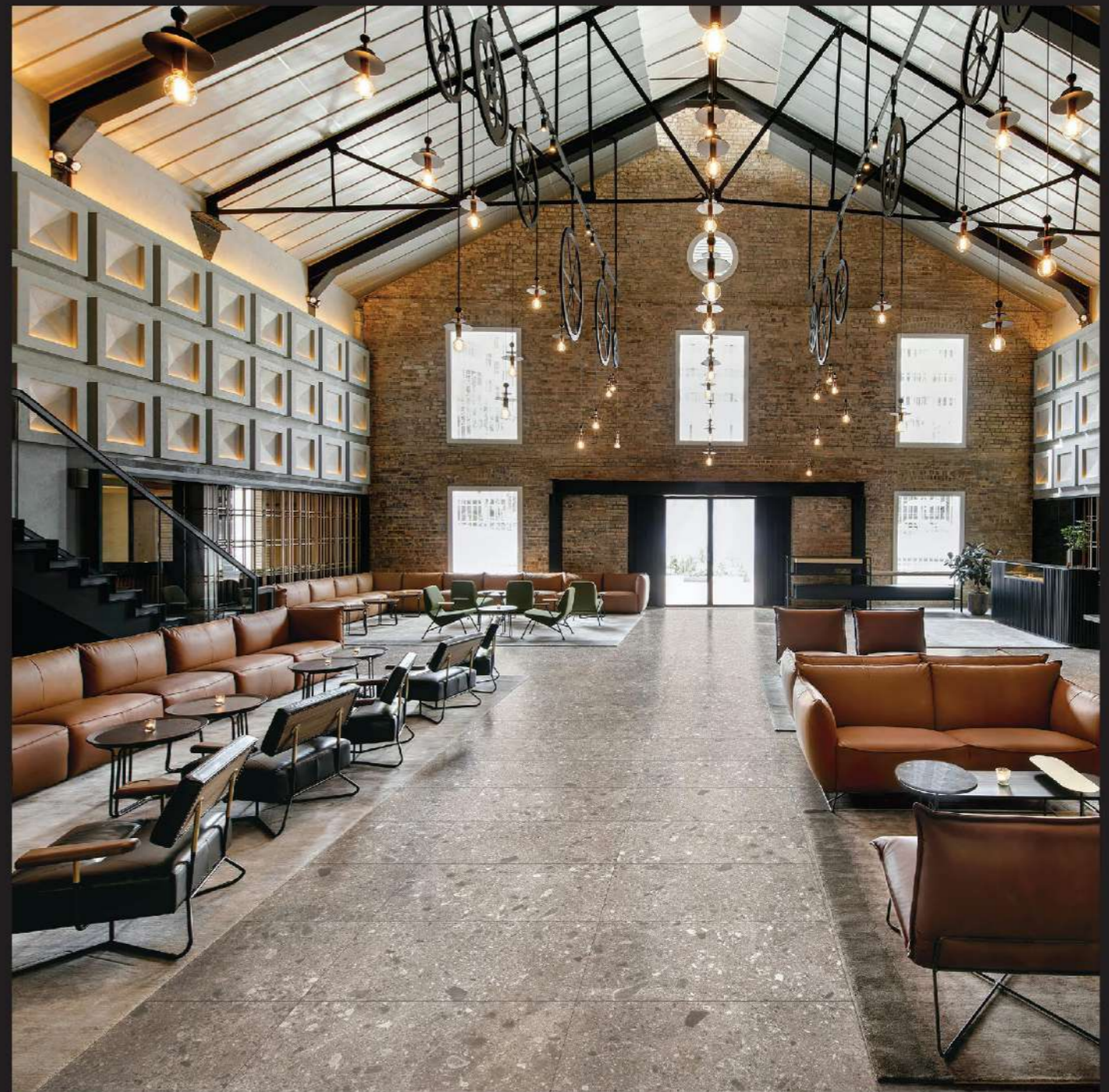
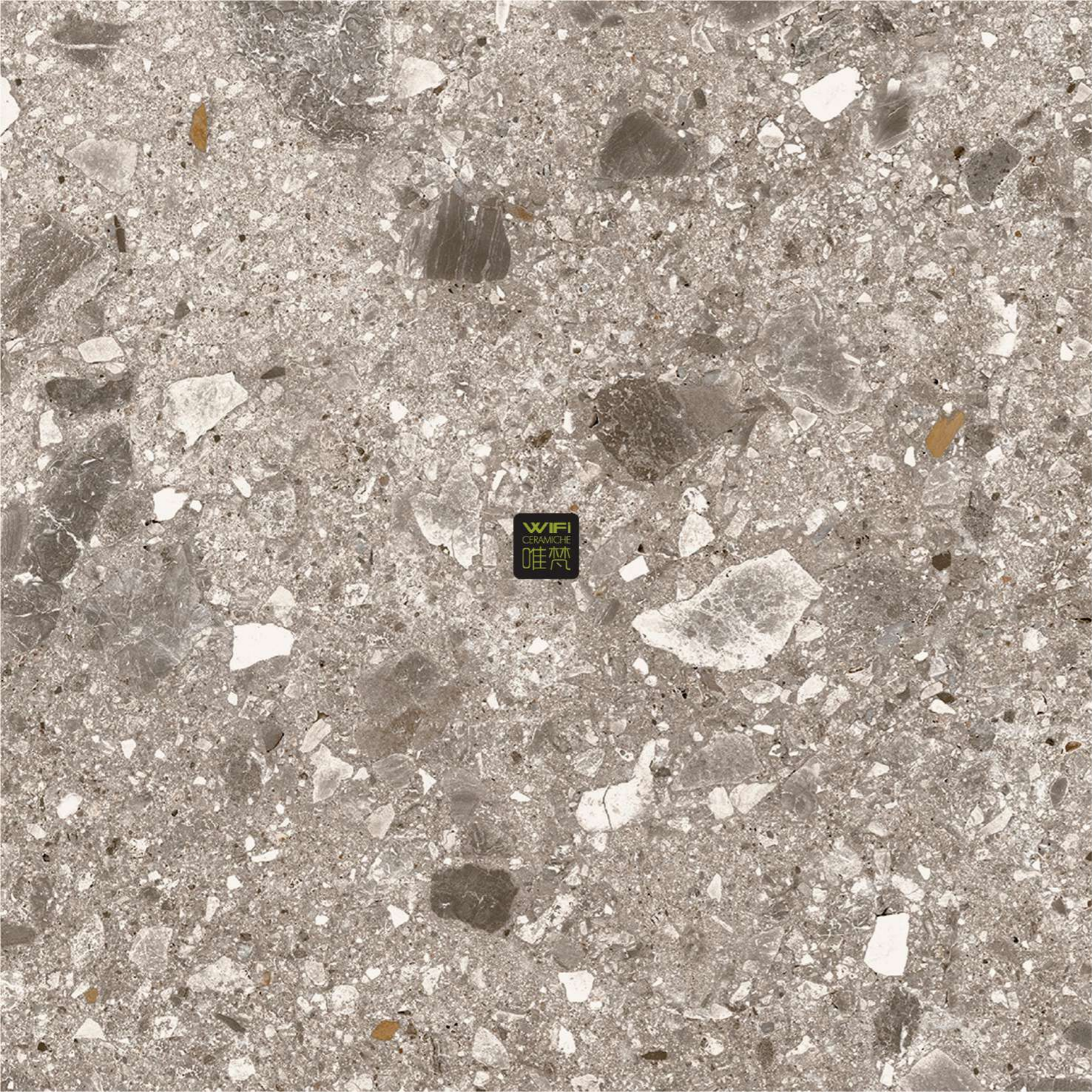
**CINDER** TRX61203  
■ LIVING ROOM APPLICATION



**CINDER** TRX61203  
■ BATHROOM APPLICATION



**CINDER** TRX61203  
■ KITCHEN APPLICATION



**BROWN** TRX61204  
■ COMMERCIAL APPLICATION



**BROWN** TRX61204  
■ BATHROOM APPLICATION



**BROWN** TRX61204  
■ KITCHEN APPLICATION



## TECHNICAL SPECIFICATIONS

DESCRIPTION	STANDARD TEST	MEASUREMENT UNIT	ISO STANDARD REQUIREMENT	WIFI
Length & Width	ISO 10545 - 2	mm	± 0.5% Max	± 0.5% Max
Thickness	ISO 10545 - 2	mm	± 5.0% Max	± 5.0% Max
Sides Straightness	ISO 10545 - 2	mm	± 0.5% Max	± 0.5% Max
Rectangularity	ISO 10545 - 2	mm	± 0.6% Max	± 0.6% Max
Flatness: a) Centre Curvature b) Edge Curvature c) Warpage	ISO 10545 - 2 ISO 10545 - 2 ISO 10545 - 2	mm mm mm	± 0.5% Max ± 0.5% Max ± 0.5% Max	± 0.5% Max ± 0.5% Max ± 0.5% Max
Surface Quality	ISO 10545 - 2	On a major area of tiles	≥ 95% free from visible defect	≥ 95% free from visible defect
Water Absorption	ISO 10545 - 3	Mass	≤ 0.5%	0.05%
Modulus of Rupture	ISO 10545 - 4	N/mm <sup>2</sup>	≥ 35N/mm <sup>2</sup>	≥ 35N/mm <sup>2</sup>
Deep Abrasion	ISO 10545 - 6	mm <sup>3</sup>	≤ 175 mm <sup>3</sup>	≤ 175 mm <sup>3</sup>
Surface Abrasion PEI ASTM C1027	ISO 10545 - 7	Visual Check	Manuf. to state Abrasion Class, Cycle Passed	Manuf. to state Abrasion Class, Cycle Passed
Crazing Test	ISO 10545 - 11	Visual Check	Not Applicable for porcelain tiles	Not Applicable for porcelain tiles
Frost Resistance	ISO 10545 - 12	Visual Check	Required	Required
Chemical Resistance (Low Cons.)	ISO 10545 - 13	Visual Check	Manuf. to state	Manuf. to state
Chemical Resistance (Household/Swimming Pool)	ISO 10545 - 13	Visual Check	Max Visible Change On Cut Side	Max Visible Change On Cut Side
Stain Resistance	ISO 10545 - 14	Visual Check	Class 3 Min	Class 3 Min
Coefficient of Friction	ISO 10545 - 17	Manuf. to state	Manuf. to state	Manuf. to state

Each different tiles series is produced to meet different performance requirements. For specific product technical performance, please request from **WIFI** sales team or their agent or distributor.

Colour Variations: Since the colour reproduction in this printed piece will vary from the actual tile colours, final selection should be made from tile samples. Colour, shade and glaze variations may exist due to the inherent characteristics of porcelain tile.

### WIFI CERAMICS

No. 13-17, Building A16,  
International Ceramics and Sanitary Ware City,  
Jihua West Road, Nanzhuang Town,  
Chancheng District, Foshan City  
Guangdong Province, China.

+86-757-8252 5001  
info@wificeramics.com  
www.wificeramics.com